

# 69th Annual Ocala Graded Bull Sale

**Tuesday, October 15, 2024 • 1 pm**

**Lunch Served at 12 noon**

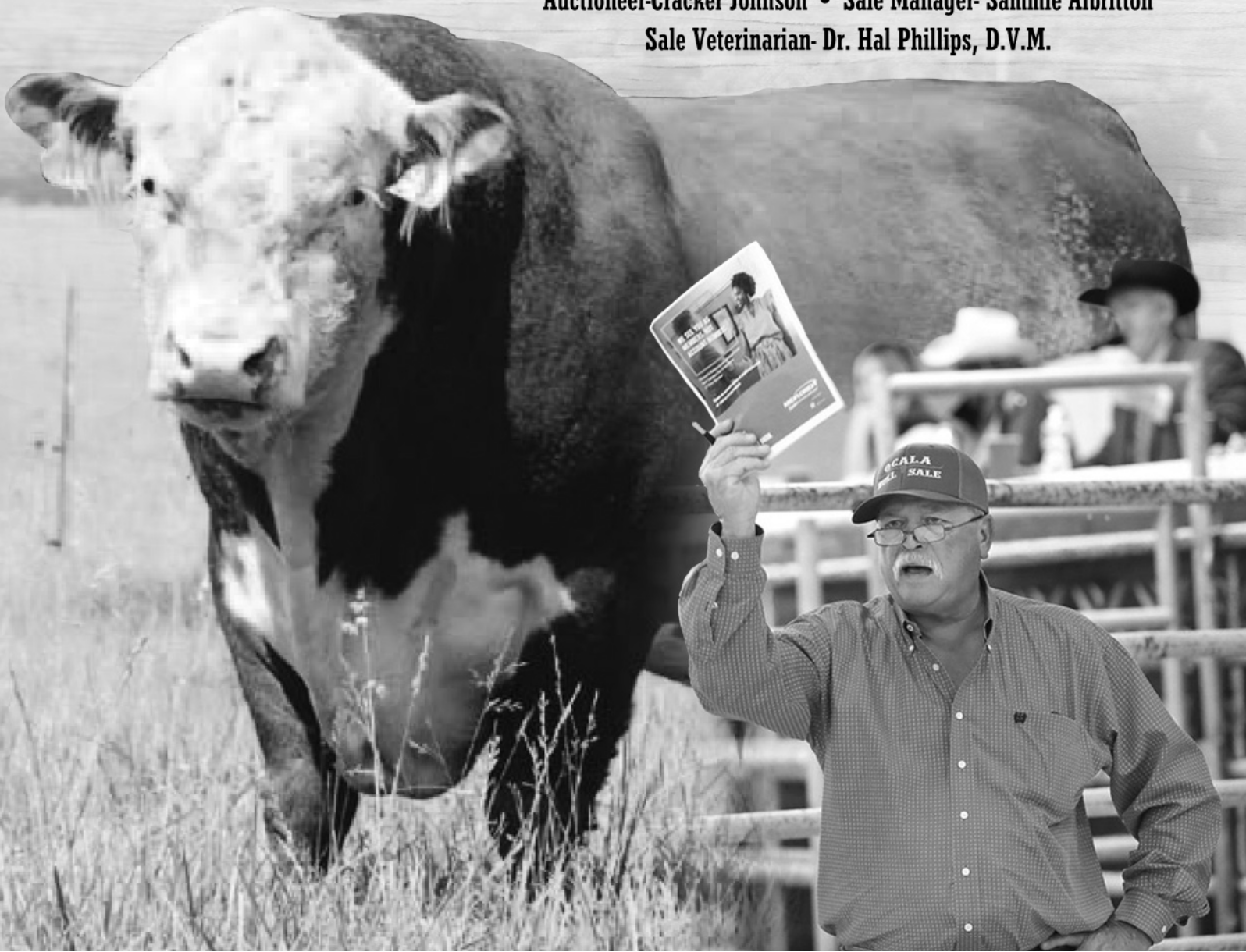
**Southeastern Livestock Pavilion • Ocala, Florida**

*"Where Quality is Plainly Marked"*

All Bulls Graded and Sifted Before the Sale

Auctioneer-Cracker Johnson • Sale Manager-Sammie Albritton

Sale Veterinarian- Dr. Hal Phillips, D.V.M.





# ADVANCED

## TIRE SERVICE

### Your Advanced Team!

Family-owned and operated since 2011!

We're your local Goodyear, Michelin, and Bridgestone dealer. Advanced Tire has five (5) locations to serve you in Brooksville, Ocala, Gainesville, and Lake City.

Don't settle for less. Bring your vehicle needs to the one who is 'Advanced'!

**Advanced Tire Service,  
'Where We Care to Do it Right!'**



**GOODYEAR**  
NATIONAL ACCOUNTS



**GOODYEAR**  
RETREADS

#### OCALA

2418 E Silver Springs Blvd.  
Ocala, FL 34470

#### OCALA

2199 NW 10th Street  
Ocala, FL 34475

#### BROOKSVILLE

1212 Ponce De Leon Blvd.  
Brooksville, FL 34601

#### LAKE CITY

837 E Duval Street  
Lake City, FL 32055

#### GAINESVILLE

912 N Main Street  
Gainesville, FL 32601



#### FLEET SERVICES

Our TIA-certified technicians and 24/7/365 commercial tire emergency roadside technicians get the job done! From Fleet Inspections, New Tires, Goodyear Retreading, Mounted Wheel Programs, Heavy Truck Alignment and Tire Balance, Mechanical Repairs, PM and DOT Inspections services to Goodyear National Account and Government Pricing, we are your Advanced Team!

#### MECHANICAL SERVICES

Our diverse offering to our customers helps drive your success! Our 'Advanced' automotive service and repair technicians make us your One-Stop Shop! We've got you covered: Alignments, Brakes, Steering/Suspension, Shocks/Struts, Drivability/Electrical/Engine Diagnostics, Oil Change Services, Fluid Exchanges, Engine/Transmission/Rear End replacements, and more.

#### MED DUTY/FARM/OTR TIRE SALES AND SERVICE

Farm equipment, construction equipment, tractor/trailers, and more, our team of experts from Hernando County to the Georgia/Florida line can keep you rolling. Increase profitability with our expedited 'Advanced' service repairs and replacements.

#### FORKLIFT TIRE SALES & SERVICE

Our 'On-site' forklift tire service keeps your job crew working! We come to you with a mobile press, an ideal option to save you time and money, avoiding downtime. On-site service, professional workmanship, and quality tires are extended to you quickly and efficiently. Limit your downtime with our 'Advanced' lift tire services!

# 352-236-8825

# 69TH ANNUAL OCALA GRADED BULL SALE

Tuesday, October 15, 2024 • Southeastern Livestock Pavilion, Ocala, Florida

## SCHEDULE OF EVENTS

**Monday, October 14, 2024**

8 am .....Grading of Bulls

**Tuesday, October 15, 2024**

Morning .....Viewing of Bulls

12 Noon .....Lunch

1 pm .....**69th Annual Ocala Graded Bull Sale**

## SALE MANAGER

Sammie Albritton • Ocala, Florida  
(352) 598-3577

## AUCTIONEER

Cracker Johnson • Chiefland, Florida  
(352) 535-5320 • License #AU2947

## SALE LOCATION

Southeastern Livestock Pavilion  
2232 NE Jacksonville Road • Ocala, Florida 34470

## SALE VETERINARIAN

Dr. Hal Phillips, DVM • Morriston, Florida  
(352) 843-3687

## UNDERSTANDING THE BASICS OF EPDS...Pages 2-4

By Fernanda M. Rezende, Caitlin L. Bainum, Joseph H. Walter, and Timothy W. Wilson

## OCALA BULL SALE CONSIGNORS...Pages 6-8

Barnett Angus Ranches – Washington, Georgia • Lots 1-4  
Buck Mountain Cattle Company – Ocala, Florida • Lot 5  
Crazy Acres – Ocala, Florida • Lot 34  
Chambliss Hereford Farms – Elizabethtown, Kentucky • Lots 47-54  
Gulf Coast Cattle- Hollister, Florida • Lots 6-8  
Guy Freed – Parkersburg, West Virginia • Lots 9-13  
Greenview Farms Inc. – Screven, Georgia • Lots 44-46, 55-60  
Little W Farm – Lebanon, Tennessee • Lots 23-28  
MO Brangus – Longwood, Florida • Lots 36-43  
Mueller Charolais – Altenburg, Missouri • Lots 14-22  
Triple B Charolais – Lebanon, Tennessee • Lots 29-33

## TERMS & CONDITIONS...Page 9

## OCALA BULL SALE LOTS...Pages 11-19

## INDEX TO ADVERTISERS...Page 24

**You didn't settle at the sale, so don't hinder your herd health.**



**SEMINOLE  
FEED STORE**

**Drop in so we can meet your needs!**

Ocala • 315 NE Watula Ave. • 352-732-4143  
40 West • 5740 W. Hwy 40 • 352-237-3222  
Bellevue • 5904 SE Hames Road • 352-245-9280



# Understanding the Basics of EPDs

Fernanda M. Rezende, Caitlin L. Bainum, Joseph H. Walter, and Timothy W. Wilson

When selecting herd sires, producers often give consideration to color, soundness, structure, body condition, temperament, and genetics. Although expected progeny differences (EPDs) provide an excellent genetic description of a bull, many producers have difficulty understanding what EPDs mean and how to use them to drive the genetic advancement of the herd. The purpose of this publication is to provide basic concepts and practical examples to help beef producers and their advisors make informed selection decisions using EPD information.

## WHAT DOES EXPECTED PROGENY DIFFERENCE (EPD) MEAN?

Expected progeny difference is the genetic description of a bull derived from data from its calves (progeny), its ancestors, and full and half siblings. The EPD represents the average genetic contribution of a specific bull to its progeny (i.e., what is transmitted from an individual to its progeny) and is expressed in the form of deviations from a reference population.

Half of the genetic material is passed on from parent to progeny through gametes (i.e., sperm and egg cells). Hence, only half of the independent effects of all genes affecting one trait are inherited. However, each offspring receives a random sample of its parent's genes, and some samples are better than others. EPDs are a representation of the average value of an individual's gametes for a specific trait. Therefore, EPDs can also be interpreted as the average value of an individual's contribution to its offspring's performance.

EPD values provide an estimate of how a bull's progeny are expected to perform relative to the progeny performance of a group of animals used as a point of reference in the genetic evaluation. This group of animals, formally called genetic base, has the average of their EPDs set as zero for all traits. Thus, all other EPDs are expressed as deviation from this average, explaining positive and negative EPD values that are reported. For instance, if a particular bull has an EPD of +1.6 lb for birth weight, and we are careful to randomly mate him to a cross-section of cows, not just those with especially heavy or light birth weight, we can expect the birth weight of its progeny to average 1.6 lb heavier than the average birth weight of the progeny from the genetic base. The genetic base can broadly be explained as a historic group of animals, such as all evaluated animals born at the onset of a 5- or 10-year period, used as a baseline.

Traits reported by a breed association may vary in number, with new traits added periodically. Typically, EPDs for growth traits such as birth weight (BW), weaning weight (WW), yearling weight (YW), and

milk are often reported for beef cattle. Depending on the breed, additional traits related to carcass and ultrasound data may also have estimated EPDs.

EPDs indicate if a bull's progeny are expected to perform above or below compared to the progeny performance of the average bull in that breed. Breed averages can be expressed as the average of the EPDs of current sires (e.g., registered animals with at least one calf record in the herd book), main sires (e.g., sires with at least 35 yearling progeny weights), and non-parents (e.g., registered animals with no current progeny in the genetic evaluation). They are published by various breed associations at least semiannually.

Notably, EPDs are exceptional tools for comparing and ranking candidates for selection, because the difference between the EPDs of two animals is an estimate of the difference expected to be observed in the performance of their progeny.

## HOW RELIABLE IS EPD?

The EPD values are always accompanied by an associated measure of reliability named accuracy. The accuracy value, expressed numerically between zero and one, is a function of heritability and is impacted by the number of progeny and ancestral records available. Therefore, a specific bull has a more reliable EPD for birth weight than for calving ease because birth weight has higher heritability. Likewise, an individual with many progeny has a more reliable EPD for any given trait than an individual with few or no progeny. As the number of progeny reported to a breed association increases, the accuracy values will move closer to one.

The accuracy values can be viewed as a percentage. For example, a value of 0.39 could be seen as 39% accurate while a value of 0.98 could be viewed as 98% accurate. A low accuracy value indicates that a sire may be young, or that few calves have been reported to the breed association. As the EPD value is adjusted to more accurately define the genetic capabilities ("true" progeny difference) of the bull, the accuracy values increase. In other words, as additional calves are registered each year, EPD values for a bull are adjusted and the accuracy value increases, which reflects in lower expected change or potential deviation between the EPD and the "true" progeny difference.

Selection must be based on EPD values, and accuracy should be used as a guide to decide how intensively an individual animal should be used in the case of change (up or down) in its EPD value. If accuracy is low (e.g., young bull with few or no progeny), the producer assumes more risk that the animal's EPD is not a perfectly accurate prediction of

genetic merit. Nevertheless, good reasons for using young bulls include their higher EPD values and lower cost of the bull or semen from the bull when compared to proven bulls. When selecting young bulls, producers can mitigate the risk by using a larger number of sires and setting a more stringent threshold (e.g., purchasing bulls or semen from bulls in the top 10% of available young bulls). This approach ensures higher accuracy of the EPDs of the group of young bulls than the accuracy of any one of these young bulls' EPDs. In addition, if one young bull is worse than the others, that young bull will sire a smaller fraction of calves. Fine-tuning the selection based on morphological and functional attributes of individuals selected by EPDs is still possible.

## HOW DO I USE EXPECTED PROGENY DIFFERENCE?

Individual EPD values are negligible, but they are a powerful selection tool when used to compare an individual to its breed average EPDs and to rank candidates for selection. For example, if the EPDs listed in Table 1 for bull A were for an Angus bull, how would it compare to its breed average (Table 2) for birth weight (BW)? How would calves from bulls A, B, and C be expected to perform for birth weight?

Bull A has a BW EPD of +0.6 with 98% accuracy. When comparing the BW EPD of +0.6 to the breed average of +1.2, bull A would be expected to produce calves with lower birth weights than the average bull in the Angus breed ( $0.6 - 1.2 = -0.6$ , or 0.6 lb lower than the breed average). Compared to its counterparts B and C, bull A would be expected to produce the heaviest calves at birth. Indeed, bull A is expected to produce calves 1.4 lb and 3.4 lb heavier at birth than bull B [ $0.6 - (-0.8) = 1.4$  lb heavier than bull B] and bull C [ $0.6 - (-2.8) = 3.4$  lb heavier than bull C], respectively.

It is also important to consider the accuracy value, especially when selecting a sire that will breed heifers, since little or no information may be available on the female genetic contribution to the progeny. Bull A has the highest accuracy value for BW, 0.98 or 98%, so it can be anticipated that this bull's progeny will have birth weight differences close to the expected value.

If bull A was a Charolais rather than Angus, the results would differ from those in the first example. Using the same +0.6 BW EPD, which is higher than the Charolais breed average of -0.4, would result in calves from bull A weighing 1 lb more than the mean birth weight of calves from an average bull in the Charolais breed [ $0.6 - (-0.4) = 1$  lb heavier than the breed average].

## GENOMIC-ENHANCED EPDS

Proven bulls have more reliable EPDs than young genomic-tested bulls due to a higher number of available progeny records. However, the latter tend to have greater EPD values due to genetic progress over generations. Genomic-enhanced EPDs have become available to the beef industry and provide for unproven bulls the same amount of accuracy

as if they had on average 20 progeny records, depending on the trait of interest. This is possible through the incorporation of genomic or DNA test information in the traditional genetic evaluation that uses pedigree and performance records. When evaluating young bulls with low accuracy values and no available genomic EPDs, an alternative is to include EPD information from their sire, dam, and grandsire in the decision-making process with an understanding that ancestral EPDs are not as accurate of a selection tool as genomic EPDs. If available, genomic EPDs provide a more accurate estimate of a young bull's genetic potential as a sire than ancestral EPDs and should be used for animal selection. It is also advised to use a group of young bulls, as the accuracy of the group EPD is greater than the accuracy of each individual bull's EPD. The accuracy of a group of young genomic-tested bulls is given by  $Acc = 1 - (1 - average\ acci)/n$ , where acci is the average accuracy of individual bulls and n is the number of bulls in the group. For example, if the average accuracy of individual young bulls is 50%, the accuracy of EPD for a group of 3 bulls is about 83% [ $1 - (1 - 0.5)/3 = 0.83$ ].

## ACROSS-BREED EPD COMPARISONS

In many operations, producers opt for a crossbreeding program to take advantage of heterosis: performance advantages of the resulting crossbred calf crop compared to the average of the parental breeds. This can present a challenge when utilizing within-breed estimated EPDs for genetic merit comparison of bulls from different breeds because breed associations often use different national evaluation programs and differences exist in the genetic base across breeds. In crossbred operations, producers must be capable of comparing sires across breeds by adding appropriate adjustment factors to the EPD produced in the genetic evaluations for each breed. Across-breed EPD (AB-EPD) adjustment factors were developed to help producers select a sire for their goals with crossbred cattle.

AB-EPD factors are published yearly for 18 different breeds by the U.S. Meat Animal Research Center (MARC) in Clay Center, NE, and made available on the BIF website ([www.beefimprovement.org](http://www.beefimprovement.org)). If the three bulls listed above (Table 1) are Angus, Brahman, and Charolais, respectively, the across-breed adjustment factors (Table 3) can be used to convert noncomparable within-breed EPDs to comparable across-breed EPDs (Table 4).

Remember that EPDs are not perfect when comparing bulls even within a breed; therefore, AB-EPDs are less accurate when comparing animals of different breeds. Many breed associations have adopted an alternative: the implementation of multi-breed genetic evaluations, which combines records from purebred and crossbred animals and accounts for direct and maternal heterosis and breed effects. Multi-breed genetic evaluations yield more accurate EPD predictions by virtue of data volume and permit direct comparison of EPDs from animals of different breed and breed composition. When EPDs from multi-breed

*(continued on next page)*

evaluations are available, they are the most effective to commercial producers who are comparing and purchasing bulls of more than one breed to use in the crossbreeding system.

## TAKE-HOME MESSAGE

In summary, EPDs are an excellent means to evaluate the expected genetic potential of a sire. Thus, EPDs are exceptional tools for comparing and ranking candidates for selection. Producers who use EPDs must

consider that they are designed to predict expected progeny differences in performance and not actual bull performance. The adjustment factors may serve as a valuable tool for producers to more appropriately compare within-breed EPDs of bulls from different breeds for a crossbreeding program. Multi-breed EPDs are the most effective and accurate alternative for comparing the genetic merit of bulls from different breeds or breed combinations.

Table 1. Estimates of EPD and accuracy values.

Animal	BW acc	WW acc	YW acc	Milk acc
Bull A	+0.6 0.98	+60 0.97	+109 0.96	+27 0.95
Bull B	-0.8 0.83	-1 0.85	+1 0.73	+10 0.78
Bull C	-2.8 0.68	+56 0.63	+118 0.58	+38 0.31

BW: Birth weight.  
WW: Weaning weight.  
YW: Yearling weight.  
acc: Accuracy.

Table 2. Breed average EPDs for Angus and Charolais.

Breed	BW	WW	YW	Milk
Angus	+1.2	+59	+105	+26
Charolais	-0.4	+57	+104	+23

BW: Birth weight.  
WW: Weaning weight.  
YW: Yearling weight.

Table 3. MARC adjustment factors to estimate across-breed EPDs.

Breed	BW	WW	YW	Milk
Angus	0.0	0.0	0.0	0.0
Brahman	9.0	60.2	24.0	12.4
Charolais	6.4	5.5	-23.9	-1.8

Table 4. Example of using across-breed adjustment factors to convert noncomparable within-breed EPDs to comparable across-breed EPDs.

Animal	Breed		BW	WW	YW	Milk
Bull A	Angus	AB adj. factors <sup>1</sup>	0.0	0.0	0.0	0.0
		EPD <sup>2</sup>	+0.6	+60	+109	+27
		AB-EPD <sup>3</sup>	+0.6	+60	+109	+27
Bull B	Brahman	AB adj. factors <sup>1</sup>	9.0	60.2	24.0	12.4
		EPD <sup>2</sup>	-0.8	-1	+1	+10
		AB-EPD <sup>3</sup>	+8.2	+59.2	+25.0	+22.4
Bull C	Charolais	AB adj. factors <sup>1</sup>	6.4	5.5	-23.9	-1.8
		EPD <sup>2</sup>	-2.8	+56	+118	+38
		AB-EPD <sup>3</sup>	+3.6	+61.5	+94.1	+36.2

<sup>1</sup> AB adj. factors are the MARC across-breed adjustment factors from Table 3.

<sup>2</sup> EPDs are the EPD values from within-breed genetic evaluation.

<sup>3</sup> AB-EPDs are the across-breed EPDs after adjustment factors are applied to within-breed EPDs.

# 2023 OCALA GRADED BULL SALE

*Scenes from Around the Barn*



We know what it takes to produce and market the world's best beef.  
Put our experience to work for you.



**Cattle Sale - Monday @ 1:00 p.m.**

Goat and Hog Sale - 1st and 3rd Friday of each month @ 12:00 p.m.

**OCALA STOCKYARD**

*Where the highest bid wins!*

**352-732-4454**



# OCALA BULL SALE CONSIGNORS

*"The Nation's Oldest Continuous Graded Bull Sale"*

## **Barnett Angus Ranches – Washington, Georgia • Lots 1-4**

Barnett Angus has been producing registered Angus bulls since 1947. We are proud to be in our 76th year of operating a continuous herd. We are a forage-based operation specifying in raising 2-year-old bulls for the commercial rancher. We firmly understand how to develop bulls that are physically sound, and backed by great genetics and pedigrees that hold up under pressure. Wilkes Barnett, owner: 701-401-9157. Chris Goldman, herdsman: 706-401-3120.

## **Buck Mountain Cattle Company – Ocala, Florida • Lot 5**

Buck Mountain Cattle is a small cow/calf operation and is owned by the Dustin Enochs family in Summerfield, FL. Starting 10 years ago, we now have approximately 80 head of cattle. We own an Angus/Hereford commercial herd as well as a registered Simmental herd. We raise commercial calves as well as registered Simmental heifers, steers, and bull calves focusing on growing the registered Simmental herd for the industry in Florida. We have had great success thus far and have seen a lot of potential out of the Simmental breed. Our pure-bred cows & bulls seem to thrive here in Florida and do extremely well when crossing with other cattle breeds. We primarily want to continue to increase our registered herd and will continue to sell more heifers, bulls, and steers in the coming years.

## **Crazy Acres – Ocala, Florida • Lot 34**

Crazy Acres registered Brahman and AOB show cattle. Our goal is to produce high-quality docile cattle that do good in the show ring and on the rail. We strive to breed high-yielding and high-quality carcass value into our herd.

## MAYO FERTILIZER INC.

P.O. Box 1833 - LAKE CITY, FL 32055



# MAYO

---

## FERTILIZER

- **MAYO STORE -**  
386-294-2024  
300 SE CLYDE AVE.  
MAYO, FL 32066

- **WILLISTON STORE -**  
352-528-3431  
2089 SW 7TH STREET  
WILLISTON, FL 32696



**CERTIFIED  
CROP ADVISER**

**SAMMIE ALBRITTON**  
SALES REPRESENTATIVE  
OFFICE 386-752-3155  
CELL 352-598-3577  
CCA# 371278



**Chambliss Hereford Farms – Elizabethtown, Kentucky • Lots 47-54**

**Gulf Coast Cattle- Hollister, Florida • Lots 6-8**

**Guy Freed – Parkersburg, West Virginia • Lots 9-13**

My wife and I moved to the family farm in 1969. We bought a few commercial cows just to keep the grass down. In 2002, we bought our first Charolais, three heifers at the WV Beef Expo for \$700 each. We now have grown our herd and are supplying quality bulls to support the industry.

**Greenview Farms Inc. – Screven, Georgia • Lots 44-46, 55-60**

On 3,500 acres in Southeast Georgia, Greenview Farms, Inc. is the oldest continuously active Polled Hereford breeder in the state and has been offering seedstock to commercial and purebred breeders since 1942. The herd consists of 400 mama cows with bulls and heifers being developed for sale. We run between 800 and 1,000 head total. In 1981, Greenview started breeding half its herd to Brahman bulls producing F1 Braford's which are in high demand in the Southeast. Please visit our website [www.greenviewfarms.net](http://www.greenviewfarms.net) Jonny Harris, Owner

**Little W Farm – Lebanon, Tennessee • Lots 23-28**

Mike and Connie Watkins own and operate Little W Farm in Lebanon, TN along with their daughters Kellie and Scott Porter (son Clifton) and Kristie and Jarrod Buhler (son Brayson). Mike and Connie run a family farm with roots in the Charolais breed. They offer a wide range of bloodlines. Their farm produces bulls which have been purchased all across the United States, and females which are competitive in the show ring. What began as a 4-H beef cattle project has now turned into a family business providing quality Charolais cattle with meat, milk, and good disposition. Make plans to visit our annual sale at the farm on the first Saturday in April each year. Check out our website: [littlewfarm.com](http://littlewfarm.com) Mike & Connie Watkins

*(consignors continued on next page)*

# SUNMOUNTAIN CATTLE



**SERVING  
FLORIDA - GEORGIA  
ALABAMA**

**352-361-7585  
352-361-6978  
352-286-5946**



**WAYNE "BO" BROWN, JR. - OWNER  
JESSICA HADLEY- BROWN - OWNER  
[SUNMOUNTAINCATTLE@AOL.COM](mailto:SUNMOUNTAINCATTLE@AOL.COM)**

- VACCINATIONS**
- DEWORMERS**
- EQUIPMENT**
- SUPPLEMENTS**
- VITAMINS**



**MO Brangus – Longwood, Florida • Lots 36-43**

After 40 years of developing better bulls, we think this is the best group we have ever had. They have a background of maternal strength, with nice disposition and are easy keeping. We are constantly striving to blend technology with common sense to bring you the best bulls we can produce.

**Mueller Charolais – Altenburg, Missouri • Lots 14-22**

It's always a pleasure going to the Ocala Bull Sale. We started raising Charolais cattle in 1964. We have been performance testing since 1983. We work on calving ease, performance, and eye appeal along with soundness and disposition.

**Triple B Charolais – Lebanon, Tennessee • Lots 29-33**

Triple B Charolais is owned by Bill, Brenda, and JW Baird. We appreciate the opportunity to bring bulls to Ocala from middle Tennessee. We at Triple B Charolais are overjoyed to be bringing bulls for our 20th year. We have strived to produce bulls that work in Florida and help make a profit for their owners. Again, this year we have purebred Charolais and percentage Charolais (Charolais x Angus). We hope to build on our relationships with past buyers and new buyers of our bulls. At Triple B, we use AI and then cover our cows with bulls that are known for growth and maternal values. If you are new to the sale stop by and we would enjoy getting to meet with you and if you bought bulls from us before, please stop by and give us feedback on the calf crops so we can continue to improve. See ya in October!



Done Right The First Time

SOUTHERN

EST.



2013

PRO FENCE

352-245-1775



# OCALA BULL SALE TERMS & CONDITIONS

## *"The Nation's Oldest Continuous Graded Bull Sale"*

1. All bulls must be accompanied by Official Certificate of Veterinary Inspection issued by accredited veterinarian showing cattle are in good health and have met the following health requirements:
  - a. Tuberculosis- Bulls may be entered in the sale without a tuberculin test provided they are identified on health certificate as originating in a tuberculosis free state. All other bulls must be negative to tuberculin within 30 days of the date of the sale. (Bulls moving to FL from other states should comply with Florida Chapter 5C-3, F.A.C.)
  - b. Brucellosis- Bulls may be entered in the sale without a brucellosis test provided they are identified on health certificates as originating in certified brucellosis free herds. All other bulls must be negative to brucellosis test within 30 days of date of sale.
  - c. PI – BVD and Trichomoniasis (State Law) – All bulls must be accompanied by a negative Persistently Infected Bovine Virus Diarrhea (P.I. BVD- test.
  - d. Vibriosis and Trichomoniasis – All bulls which have been exposed to females must be accompanied by negative vibriosis and trichomoniasis tests.
- c. All vehicles transporting bulls to the sale must be properly cleaned and disinfected.
2. Each sale lot will be sold separately to the highest bidder. The sale order will be determined the day before the sale.
3. Any changes from information in the catalog will be announced from the auction block and will take precedence.
4. The auctioneer selling will settle any dispute as to bids by declaring all bids off and reselling the animal(s) in question.
5. Each animal will be at the seller's risk until sold, but as soon as sold will be at the purchaser's risk.
6. Terms of sale are cash, and payment is due from purchaser upon termination of the sale. Purchased animals will not be delivered until settlement has been made and released by barn superintendent.
7. All persons who attend the sale do so at their own risk. This association (Marion County Cattlemen's Association); assumes no liability, legal, or otherwise, for the safety of the building or premises, or for the behavior of or future uselessness of the animals. This association acts only as an agent for the consignors and assumes no responsibility, legal, or otherwise, to the public in general or between buyer and seller.
8. Bulls will be graded by a committee composed of four outstanding cattlemen and a representative of the University of Florida.
9. All bulls are guaranteed breeders by the consignor. In addition, all bulls must pass breeding soundness examination by an accredited veterinarian within 30 days of the date of the sale, and a certificate showing acceptable breeding soundness shall accompany all bulls to the sale.

# BARNETT

ANGUS RANCHES



## BAR FIREBALL 881K

20826276 • BD: 10/13/22

This powerful Fireball son out of a Quantum dam may be one of the best bulls we've sold to date. Physically, he is truly a specimen! His data indicates he has the genetic potential to be an Angus "Changemaker." Calving ease, growth, moderate stature and top of the breed for end-product merit place him in an elite category of young Angus sires.

### This Female Sells!



AI bred to Institution  
(20384806).

## BAR KARA K547 • 20826363 • BD: 10/25/22

CED	BW	VW	YW	SC	HP	Milk	SEN	Doc	Claw	Angle
+15	-1.3	+65	+115	+0.42	+11.8	+30	-19	+19	+0.67	+0.51
PAP	HS	CW	Marb	RE	SM	SW	SF	SG	SB	SC
-0.25	+0.32	+50	+1.70	+0.91	+60	+70	+101	+107	+208	+330

This beautiful Fireball daughter will be featured in the first ever BAR female offering with her two full sisters. Together the trio offers an average \$Beef Index of +232 and an average \$Combined Index of +353. K547 sells safe to Kenny Institution 2010, who is the high \$Maternal son of Basin Safe Deposit 9324.

**LiveAuctions.TV** Watch the sale and bid live online at [LiveAuctions.tv](https://www.LiveAuctions.tv)

# 5<sup>th</sup> Annual BAR Production Sale

Saturday, November 2, 2024

At the BAR sale facility, Washington, Georgia

## SELLING

**125 POWERFUL TWO-YEAR-OLD ANGUS BULLS**

**20 ELITE ANGUS FEMALES**

**50 HEAVY BRED COMMERCIAL FEMALES**



For more information, contact:

**BARNETT ANGUS RANCHES**

Wilkes Barnett • (706) 401-9157 • Chris Goldman • (706) 401-3120 • CJ Goldman • (706) 401-2462  
1685 Lexington Rd. • Washington, GA 30673 • [www.BarnettAngus.com](http://www.BarnettAngus.com)

Producing Quality Angus Cattle for More than 75 Years

To Request a Sale Book:

**SIMS**  
Plus LLC

Mark C. Sims • (580) 595-0901  
[simsplusllc@gmail.com](mailto:simsplusllc@gmail.com)  
[www.SimsPlusLLC.com](http://www.SimsPlusLLC.com)

<b>Lot 1</b>	<b>BAR Exclusive 741K</b> <i>From Barnett Angus Ranch</i>					
<b>BREED</b>	<b>DOB</b>		<b>TAT#</b>			
Angus	11/13/22		741K			
<b>BW</b>	<b>BW EPD</b>	<b>WW</b>	<b>WW EPD</b>	<b>YW</b>	<b>YW EPD</b>	<b>MILK EPD</b>
64	-2.8	499	62	1037	106	35
<b>REA EPD</b>	<b>IMF EPD</b>	<b>CW EPD</b>	<b>Purchase \$</b>			
0.54	0.047	51				



Lot 1

<b>Lot 2</b>	<b>BAR Exclusive 756K</b> <i>From Barnett Angus Ranch</i>					
<b>BREED</b>	<b>DOB</b>		<b>TAT#</b>			
Angus	11/9/22		756K			
<b>BW</b>	<b>BW EPD</b>	<b>WW</b>	<b>WW EPD</b>	<b>YW</b>	<b>YW EPD</b>	<b>MILK EPD</b>
67	-1.1	516	46	977	90	31
<b>REA EPD</b>	<b>IMF EPD</b>	<b>CW EPD</b>	<b>Purchase \$</b>			
0.55	0.060	40				



Lot 2

<b>Lot 3</b>	<b>BAR Architect 759K</b> <i>From Barnett Angus Ranch</i>					
<b>BREED</b>	<b>DOB</b>		<b>TAT#</b>			
Angus	10/25/22		759K			
<b>BW</b>	<b>BW EPD</b>	<b>WW</b>	<b>WW EPD</b>	<b>YW</b>	<b>YW EPD</b>	<b>MILK EPD</b>
77	-1.5	663	71	1202	118	25
<b>REA EPD</b>	<b>IMF EPD</b>	<b>CW EPD</b>	<b>Purchase \$</b>			
0.71	-0.010	49				

<b>Lot 4</b>	<b>BAR Inertia 851K</b> <i>From Barnett Angus Ranch</i>					
<b>BREED</b>	<b>DOB</b>		<b>TAT#</b>			
Angus	12/3/22		851K			
<b>BW</b>	<b>BW EPD</b>	<b>WW</b>	<b>WW EPD</b>	<b>YW</b>	<b>YW EPD</b>	<b>MILK EPD</b>
64	-1.5	528	70	1003	134	34
<b>REA EPD</b>	<b>IMF EPD</b>	<b>CW EPD</b>	<b>Purchase \$</b>			
0.93	0.076	56				



Lot 4

<b>Lot 5</b>	<b>0122L</b> <i>From Buck Mountain Cattle Co.</i>					
<b>BREED</b>	<b>DOB</b>		<b>TAT#</b>			
Simmental	1/22/23		0122L			
<b>BW</b>	<b>BW EPD</b>	<b>WW</b>	<b>WW EPD</b>	<b>YW</b>	<b>YW EPD</b>	<b>MILK EPD</b>
55	2.5	75.4	1000	105.5	19.4	
<b>REA EPD</b>	<b>IMF EPD</b>	<b>CW EPD</b>	<b>Purchase \$</b>			
0.75	0.1	16.2				



Lot 5

# Rick Stilwell

- Soil Sampling
- Weed Management
- Fertility Recommendations
- Fence Line Spraying

Mid-Florida  
AG Services, LLC

**352-598-3630**

rick.midfloridaag@gmail.com



<b>Lot 6</b>	<b>M985378</b> <i>From Gulf Coast Cattle</i>			
<b>BREED</b>	<b>DOB</b>	<b>TAT#</b>		
Charolais	3/7/23	525L		
<b>BW</b>	<b>WW</b>	<b>YW</b>	<b>MILK</b>	
<b>EPD</b>	<b>EPD</b>	<b>EPD</b>	<b>EPD</b>	
91	0.5	65	99	31
<b>REA EPD</b>	<b>IMF EPD</b>	<b>CW EPD</b>	<b>Purchase \$</b>	
0.64	0.13	17		

<b>Lot 7</b>	<b>M986075</b> <i>From Gulf Coast Cattle</i>					
<b>BREED</b>	<b>DOB</b>	<b>TAT#</b>				
Charolais	3/16/22	2114				
<b>BW</b>	<b>WW</b>	<b>YW</b>	<b>MILK</b>			
<b>EPD</b>	<b>EPD</b>	<b>EPD</b>	<b>EPD</b>			
86	-0.6	602	35	1252	70	26
<b>REA EPD</b>	<b>IMF EPD</b>	<b>CW EPD</b>	<b>Purchase \$</b>			
0.32	0.16	7				

<b>Lot 8</b>	<b>M986064</b> <i>From Gulf Coast Cattle</i>			
<b>BREED</b>	<b>DOB</b>	<b>TAT#</b>		
Charolais	4/14/22	2146		
<b>BW</b>	<b>WW</b>	<b>YW</b>	<b>MILK</b>	
<b>EPD</b>	<b>EPD</b>	<b>EPD</b>	<b>EPD</b>	
87	0.6	60	100	20
<b>REA EPD</b>	<b>IMF EPD</b>	<b>CW EPD</b>	<b>Purchase \$</b>	
0.59	-0.002	19		

<b>Lot 9</b>	<b>FC Rooster</b> <i>From Guy Freed</i>			
<b>BREED</b>	<b>DOB</b>	<b>TAT#</b>		
Charolais	5/2/23	2321		
<b>BW</b>	<b>WW</b>	<b>YW</b>	<b>MILK</b>	
<b>EPD</b>	<b>EPD</b>	<b>EPD</b>	<b>EPD</b>	
<b>REA EPD</b>	<b>IMF EPD</b>	<b>CW EPD</b>	<b>Purchase \$</b>	

<b>Lot 10</b>	<b>Gold Strike</b> <i>From Guy Freed</i>			
<b>BREED</b>	<b>DOB</b>	<b>TAT#</b>		
Charolais	3/17/23	2352		
<b>BW</b>	<b>WW</b>	<b>YW</b>	<b>MILK</b>	
<b>EPD</b>	<b>EPD</b>	<b>EPD</b>	<b>EPD</b>	
<b>REA EPD</b>	<b>IMF EPD</b>	<b>CW EPD</b>	<b>Purchase \$</b>	

<b>Lot 11</b>	<b>FC Rampant</b> <i>From Guy Freed</i>			
<b>BREED</b>	<b>DOB</b>	<b>TAT#</b>		
Charolais	3/24/23	2389		
<b>BW</b>	<b>WW</b>	<b>YW</b>	<b>MILK</b>	
<b>EPD</b>	<b>EPD</b>	<b>EPD</b>	<b>EPD</b>	
<b>REA EPD</b>	<b>IMF EPD</b>	<b>CW EPD</b>	<b>Purchase \$</b>	

<b>Lot 12</b>	<b>Big Gun</b> <i>From Guy Freed</i>			
<b>BREED</b>	<b>DOB</b>	<b>TAT#</b>		
Charolais	3/9/23	2344		
<b>BW</b>	<b>WW</b>	<b>YW</b>	<b>MILK</b>	
<b>EPD</b>	<b>EPD</b>	<b>EPD</b>	<b>EPD</b>	
<b>REA EPD</b>	<b>IMF EPD</b>	<b>CW EPD</b>	<b>Purchase \$</b>	

<b>Lot 13</b>	<b>FC Commodore</b> <i>From Guy Freed</i>			
<b>BREED</b>	<b>DOB</b>	<b>TAT#</b>		
Charolais	3/18/23	2361		
<b>BW</b>	<b>WW</b>	<b>YW</b>	<b>MILK</b>	
<b>EPD</b>	<b>EPD</b>	<b>EPD</b>	<b>EPD</b>	
<b>REA EPD</b>	<b>IMF EPD</b>	<b>CW EPD</b>	<b>Purchase \$</b>	

<b>Lot 14</b>	<b>M984591</b> <i>From Mueller Charolais</i>					
<b>BREED</b>	<b>DOB</b>	<b>TAT#</b>				
Charolais	3/5/23	M308				
<b>BW</b>	<b>WW</b>	<b>YW</b>	<b>MILK</b>			
<b>EPD</b>	<b>EPD</b>	<b>EPD</b>	<b>EPD</b>			
75	-2.7	643	56	1089	94	28
<b>REA EPD</b>	<b>IMF EPD</b>	<b>CW EPD</b>	<b>Purchase \$</b>			
0.68	0.021	17				

# THANK YOU!

*to all  
Consignors,  
Buyers,  
& Sponsors*

MARION COUNTY CATTLEMEN'S ASSOCIATION

P.O. Box 6696

Ocala, Florida 34478

and the  
Marion County Board  
of County Commissioner's

<b>Lot 15</b>	<b>M984596</b> <i>From Mueller Charolais</i>		
<b>BREED</b>	<b>DOB</b>	<b>TAT#</b>	
Charolais	5/11/23	M312	
<b>BW</b>	<b>WW</b>	<b>YW</b>	<b>MILK</b>
<b>EPD</b>	<b>EPD</b>	<b>EPD</b>	<b>EPD</b>
80	-3.2	654	60
1192	106	23	
<b>REA EPD</b>	<b>IMF EPD</b>	<b>CW EPD</b>	<b>Purchase \$</b>

<b>Lot 16</b>	<b>M984590</b> <i>From Mueller Charolais</i>		
<b>BREED</b>	<b>DOB</b>	<b>TAT#</b>	
Charolais	2/28/23	M345	
<b>BW</b>	<b>WW</b>	<b>YW</b>	<b>MILK</b>
<b>EPD</b>	<b>EPD</b>	<b>EPD</b>	<b>EPD</b>
78	-0.8	678	54
1164	106	26	
<b>REA EPD</b>	<b>IMF EPD</b>	<b>CW EPD</b>	<b>Purchase \$</b>
0.67	-0.014	20	

<b>Lot 17</b>	<b>M984595</b> <i>From Mueller Charolais</i>		
<b>BREED</b>	<b>DOB</b>	<b>TAT#</b>	
Charolais	5/6/23	M346	
<b>BW</b>	<b>WW</b>	<b>YW</b>	<b>MILK</b>
<b>EPD</b>	<b>EPD</b>	<b>EPD</b>	<b>EPD</b>
75	-0.1	664	59
1224	103	26	
<b>REA EPD</b>	<b>IMF EPD</b>	<b>CW EPD</b>	<b>Purchase \$</b>
0.69	0.026	20	

<b>Lot 18</b>	<b>M984878</b> <i>From Mueller Charolais</i>		
<b>BREED</b>	<b>DOB</b>	<b>TAT#</b>	
Charolais	5/6/23	M347	
<b>BW</b>	<b>WW</b>	<b>YW</b>	<b>MILK</b>
<b>EPD</b>	<b>EPD</b>	<b>EPD</b>	<b>EPD</b>
75	-0.1	598	59
1102	103	26	
<b>REA EPD</b>	<b>IMF EPD</b>	<b>CW EPD</b>	<b>Purchase \$</b>
0.69	0.026	20	

<b>Lot 19</b>	<b>M984876</b> <i>From Mueller Charolais</i>		
<b>BREED</b>	<b>DOB</b>	<b>TAT#</b>	
Charolais	3/23/23	M352	
<b>BW</b>	<b>WW</b>	<b>YW</b>	<b>MILK</b>
<b>EPD</b>	<b>EPD</b>	<b>EPD</b>	<b>EPD</b>
82	-1.1	623	53
1210	102	22	
<b>REA EPD</b>	<b>IMF EPD</b>	<b>CW EPD</b>	<b>Purchase \$</b>

<b>Lot 20</b>	<b>M988328</b> <i>From Mueller Charolais</i>		
<b>BREED</b>	<b>DOB</b>	<b>TAT#</b>	
Charolais	3/29/23	M376	
<b>BW</b>	<b>WW</b>	<b>YW</b>	<b>MILK</b>
<b>EPD</b>	<b>EPD</b>	<b>EPD</b>	<b>EPD</b>
80	-1.6	779	77
1323	127	25	
<b>REA EPD</b>	<b>IMF EPD</b>	<b>CW EPD</b>	<b>Purchase \$</b>

<b>Lot 21</b>	<b>M984593</b> <i>From Mueller Charolais</i>		
<b>BREED</b>	<b>DOB</b>	<b>TAT#</b>	
Charolais	3/29/23	M378	
<b>BW</b>	<b>WW</b>	<b>YW</b>	<b>MILK</b>
<b>EPD</b>	<b>EPD</b>	<b>EPD</b>	<b>EPD</b>
90	0.7	674	64
1064	104	23	
<b>REA EPD</b>	<b>IMF EPD</b>	<b>CW EPD</b>	<b>Purchase \$</b>
0.93	0.012	18	

<b>Lot 22</b>	<b>M988326</b> <i>From Mueller Charolais</i>		
<b>BREED</b>	<b>DOB</b>	<b>TAT#</b>	
Charolais	2/5/23	M330	
<b>BW</b>	<b>WW</b>	<b>YW</b>	<b>MILK</b>
<b>EPD</b>	<b>EPD</b>	<b>EPD</b>	<b>EPD</b>
85	-0.6	695	58
1143	106	21	
<b>REA EPD</b>	<b>IMF EPD</b>	<b>CW EPD</b>	<b>Purchase \$</b>
0.54	0.011	18	

<b>Lot 23</b>	<b>10022</b> <i>From Little W Farm</i>		
<b>BREED</b>	<b>DOB</b>	<b>TAT#</b>	
Charolais	10/2/22	10022	
<b>BW</b>	<b>WW</b>	<b>YW</b>	<b>MILK</b>
<b>EPD</b>	<b>EPD</b>	<b>EPD</b>	<b>EPD</b>
84			
<b>REA EPD</b>	<b>IMF EPD</b>	<b>CW EPD</b>	<b>Purchase \$</b>

## SHOW STEERS & HEIFERS AVAILABLE



Madaline Evans - 352-322-1158 | Amanda Permar - 352-445-4287  
Savannah Dominey - 352-322-1155

19325 W Hwy 40 - Dunnellon, FL 34432

<b>Lot 24</b>	<b>M999182</b> <i>From Little W Farm</i>		
<b>BREED</b>	<b>DOB</b>	<b>TAT#</b>	
Charolais	10/20/22	10222	
<b>BW</b>	<b>WW</b>	<b>YW</b>	<b>MILK</b>
<b>EPD</b>	<b>EPD</b>	<b>EPD</b>	<b>EPD</b>
83	53	95	18
<b>REA EPD</b>	<b>IMF EPD</b>	<b>CW EPD</b>	<b>Purchase \$</b>
0.52	0.0	13	

<b>Lot 25</b>	<b>32723</b> <i>From Little W Farm</i>		
<b>BREED</b>	<b>DOB</b>	<b>TAT#</b>	
Charolais	3/27/23	32723	
<b>BW</b>	<b>WW</b>	<b>YW</b>	<b>MILK</b>
<b>EPD</b>	<b>EPD</b>	<b>EPD</b>	<b>EPD</b>
83			
<b>REA EPD</b>	<b>IMF EPD</b>	<b>CW EPD</b>	<b>Purchase \$</b>

<b>Lot 26</b>	<b>EM997622</b> <i>From Little W Farm</i>		
<b>BREED</b>	<b>DOB</b>	<b>TAT#</b>	
Charolais	11/16/22	11162	
<b>BW</b>	<b>WW</b>	<b>YW</b>	<b>MILK</b>
<b>EPD</b>	<b>EPD</b>	<b>EPD</b>	<b>EPD</b>
83	0.7	69	127
<b>REA EPD</b>	<b>IMF EPD</b>	<b>CW EPD</b>	<b>Purchase \$</b>
0.78	0.019	31	

<b>Lot 27</b>	<b>M999297</b> <i>From Little W Farm</i>		
<b>BREED</b>	<b>DOB</b>	<b>TAT#</b>	
Charolais	9/28/22	32222	
<b>BW</b>	<b>WW</b>	<b>YW</b>	<b>MILK</b>
<b>EPD</b>	<b>EPD</b>	<b>EPD</b>	<b>EPD</b>
81	55	98	17
<b>REA EPD</b>	<b>IMF EPD</b>	<b>CW EPD</b>	<b>Purchase \$</b>
0.31	-0.009	6	

<b>Lot 28</b>	<b>M997623</b> <i>From Little W Farm</i>		
<b>BREED</b>	<b>DOB</b>	<b>TAT#</b>	
Charolais	1/25/23	12523	
<b>BW</b>	<b>WW</b>	<b>YW</b>	<b>MILK</b>
<b>EPD</b>	<b>EPD</b>	<b>EPD</b>	<b>EPD</b>
85	0.6	59	112
<b>REA EPD</b>	<b>IMF EPD</b>	<b>CW EPD</b>	<b>Purchase \$</b>
0.76	-0.008	20	

<b>Lot 29</b>	<b>M95901</b> <i>From Triple B Charolais</i>		
<b>BREED</b>	<b>DOB</b>	<b>TAT#</b>	
Charolais	8/11/22	2218	
<b>BW</b>	<b>WW</b>	<b>YW</b>	<b>MILK</b>
<b>EPD</b>	<b>EPD</b>	<b>EPD</b>	<b>EPD</b>
72			
<b>REA EPD</b>	<b>IMF EPD</b>	<b>CW EPD</b>	<b>Purchase \$</b>

<b>Lot 30</b>	<b>MP4902</b> <i>From Triple B Charolais</i>		
<b>BREED</b>	<b>DOB</b>	<b>TAT#</b>	
Charolais	5/30/23	2307	
<b>BW</b>	<b>WW</b>	<b>YW</b>	<b>MILK</b>
<b>EPD</b>	<b>EPD</b>	<b>EPD</b>	<b>EPD</b>
78	605	1200	
<b>REA EPD</b>	<b>IMF EPD</b>	<b>CW EPD</b>	<b>Purchase \$</b>

<b>Lot 31</b>	<b>M985988</b> <i>From Triple B Charolais</i>		
<b>BREED</b>	<b>DOB</b>	<b>TAT#</b>	
Charolais	6/17/22	2215	
<b>BW</b>	<b>WW</b>	<b>YW</b>	<b>MILK</b>
<b>EPD</b>	<b>EPD</b>	<b>EPD</b>	<b>EPD</b>
78	-0.4	53	101
<b>REA EPD</b>	<b>IMF EPD</b>	<b>CW EPD</b>	<b>Purchase \$</b>
0.69	0.025	18	

<b>Lot 32</b>	<b>M998663</b> <i>From Triple B Charolais</i>		
<b>BREED</b>	<b>DOB</b>	<b>TAT#</b>	
Charolais	4/14/23	2301	
<b>BW</b>	<b>WW</b>	<b>YW</b>	<b>MILK</b>
<b>EPD</b>	<b>EPD</b>	<b>EPD</b>	<b>EPD</b>
80	-0.9	703	65
<b>REA EPD</b>	<b>IMF EPD</b>	<b>CW EPD</b>	<b>Purchase \$</b>
0.80	-0.003	24	

# LeFils Farms

# LF



## 352-258-5524

### Peanuts • Hay • Molasses

FERTILIZER • LIME • DOLOMITE • PESTICIDE • HERBICIDE



<b>Lot 33</b>	<b>M998664</b> <i>From Triple B Charolais</i>
<b>BREED</b>	<b>DOB</b> <b>TAT#</b>
Charolais	5/11/23      2305
<b>BW</b>	<b>BW EPD</b> <b>WW EPD</b> <b>YW EPD</b> <b>MILK EPD</b>
69	-1.1      505      58      1075      110      17
<b>REA EPD</b>	<b>IMF EPD</b> <b>CW EPD</b> <b>Purchase \$</b>
0.57	0.042      22

<b>Lot 34</b>	<b>CA MR Belle 1</b> <i>From Crazy Acres</i>
<b>BREED</b>	<b>DOB</b> <b>TAT#</b>
Brahman	1/1/23      1062554
<b>BW</b>	<b>BW EPD</b> <b>WW EPD</b> <b>YW EPD</b> <b>MILK EPD</b>
65	1.5      675      10      1000      24      9
<b>REA EPD</b>	<b>IMF EPD</b> <b>CW EPD</b> <b>Purchase \$</b>
13.2	3.6



<b>Lot 36</b>	<b>MO Bull 62K</b> <i>From MO Brangus</i>
<b>BREED</b>	<b>DOB</b> <b>TAT#</b>
Brangus	10/8/22      62K
<b>BW</b>	<b>BW EPD</b> <b>WW EPD</b> <b>YW EPD</b> <b>MILK EPD</b>
74	0.6      510      35      740      66      7
<b>REA EPD</b>	<b>IMF EPD</b> <b>CW EPD</b> <b>Purchase \$</b>
0.23	0.02

<b>Lot 37</b>	<b>MO Bull 64K</b> <i>From MO Brangus</i>
<b>BREED</b>	<b>DOB</b> <b>TAT#</b>
Brangus	10/13/22      64K
<b>BW</b>	<b>BW EPD</b> <b>WW EPD</b> <b>YW EPD</b> <b>MILK EPD</b>
91	2.9      555      44      756      78      8
<b>REA EPD</b>	<b>IMF EPD</b> <b>CW EPD</b> <b>Purchase \$</b>
0.19	0.03

<b>Lot 38</b>	<b>MO Bull 78K</b> <i>From MO Brangus</i>
<b>BREED</b>	<b>DOB</b> <b>TAT#</b>
Brangus	10/27/22      78K
<b>BW</b>	<b>BW EPD</b> <b>WW EPD</b> <b>YW EPD</b> <b>MILK EPD</b>
70	-0.7      457      24      632      51      6
<b>REA EPD</b>	<b>IMF EPD</b> <b>CW EPD</b> <b>Purchase \$</b>
0.12	0



Call  
**VAN AKIN**



**352-804-2446**

**Foxfire**  
**REALTY**

<b>Lot 39</b>	<b>MO Bull 81K</b> <i>From MO Brangus</i>						
<b>BREED</b>	<b>DOB</b>		<b>TAT#</b>				
Brangus	10/29/22		81K				
<b>BW</b>	<b>BW EPD</b>	<b>WW</b>	<b>WW EPD</b>	<b>YW</b>	<b>YW EPD</b>	<b>MILK</b>	<b>MILK EPD</b>
85	2.3	546	40	660	64	8	
<b>REA EPD</b>	<b>IMF EPD</b>	<b>CW EPD</b>	<b>Purchase \$</b>				
0.22	0.01						



Lot 39

<b>Lot 40</b>	<b>Mo Bull 87K</b> <i>From MO Brangus</i>						
<b>BREED</b>	<b>DOB</b>		<b>TAT#</b>				
Brangus	11/9/22		87K				
<b>BW</b>	<b>BW EPD</b>	<b>WW</b>	<b>WW EPD</b>	<b>YW</b>	<b>YW EPD</b>	<b>MILK</b>	<b>MILK EPD</b>
82	3	494	36	661	63	6	
<b>REA EPD</b>	<b>IMF EPD</b>	<b>CW EPD</b>	<b>Purchase \$</b>				
0.17	0.01						



Lot 40

<b>Lot 41</b>	<b>MO Bull 96K</b> <i>From MO Brangus</i>						
<b>BREED</b>	<b>DOB</b>		<b>TAT#</b>				
Brangus	10/11/22		96K				
<b>BW</b>	<b>BW EPD</b>	<b>WW</b>	<b>WW EPD</b>	<b>YW</b>	<b>YW EPD</b>	<b>MILK</b>	<b>MILK EPD</b>
81	2.2	439	28	626	57	7	
<b>REA EPD</b>	<b>IMF EPD</b>	<b>CW EPD</b>	<b>Purchase \$</b>				
0.16	0.02						



Lot 41

<b>Lot 42</b>	<b>MO Bull 97K</b> <i>From MO Brangus</i>						
<b>BREED</b>	<b>DOB</b>		<b>TAT#</b>				
Brangus	11/8/22		97K				
<b>BW</b>	<b>BW EPD</b>	<b>WW</b>	<b>WW EPD</b>	<b>YW</b>	<b>YW EPD</b>	<b>MILK</b>	<b>MILK EPD</b>
80	1.8	535	40	686	69	9	
<b>REA EPD</b>	<b>IMF EPD</b>	<b>CW EPD</b>	<b>Purchase \$</b>				
0.16	0						



Lot 42

*Join us!*



Contact the  
Marion County Cattlemen's Association  
to become a member!  
You can find us on Facebook too!

**FREE  
INSPECTIONS**



**FREE  
ESTIMATES**

**SOUTHERN PRO  
ROOFING, LLC**

**352-209-5504**

**Licensed**

**CCC1333758**

**Insured**

<b>Lot 43</b>	<b>MO Bull 99K</b> <i>From MO Brangus</i>						
<b>BREED</b>	<b>DOB</b>		<b>TAT#</b>				
Brangus	10/26/22		99K				
<b>BW</b>	<b>BW</b>	<b>WW</b>	<b>YW</b>	<b>MILK</b>			
EPD	EPD	EPD	EPD	EPD			
75	0.9	534	34	680	63	13	
<b>REA EPD</b>	<b>IMF EPD</b>	<b>CW EPD</b>	<b>Purchase \$</b>				
0.21	0.04						



Lot 43

<b>Lot 44</b>	<b>GV Future 530 B252</b> <i>From Greenview Farms Inc.</i>						
<b>BREED</b>	<b>DOB</b>		<b>TAT#</b>				
Braford	11/27/22		B252				
<b>BW</b>	<b>BW</b>	<b>WW</b>	<b>YW</b>	<b>MILK</b>			
EPD	EPD	EPD	EPD	EPD			
75	+2	706	1206				
<b>REA EPD</b>	<b>IMF EPD</b>	<b>CW EPD</b>	<b>Purchase \$</b>				

<b>Lot 45</b>	<b>GV Future 530 B202</b> <i>From Greenview Farms Inc.</i>						
<b>BREED</b>	<b>DOB</b>		<b>TAT#</b>				
Braford	11/8/22		B202				
<b>BW</b>	<b>BW</b>	<b>WW</b>	<b>YW</b>	<b>MILK</b>			
EPD	EPD	EPD	EPD	EPD			
83	+0.3	664	1140				
<b>REA EPD</b>	<b>IMF EPD</b>	<b>CW EPD</b>	<b>Purchase \$</b>				

<b>Lot 46</b>	<b>GV Future 162/7 B313</b> <i>From Greenview Farms Inc.</i>						
<b>BREED</b>	<b>DOB</b>		<b>TAT#</b>				
Braford	12/16/22		B313				
<b>BW</b>	<b>BW</b>	<b>WW</b>	<b>YW</b>	<b>MILK</b>			
EPD	EPD	EPD	EPD	EPD			
89	+3	742	1080				
<b>REA EPD</b>	<b>IMF EPD</b>	<b>CW EPD</b>	<b>Purchase \$</b>				



Lot 46



Lot 45

<b>Lot 47</b>	<b>CH L1 Domino 2010</b> <i>From Chambliss Herefords</i>						
<b>BREED</b>	<b>DOB</b>		<b>TAT#</b>				
Hereford	2/15/22		2010				
<b>BW</b>	<b>BW</b>	<b>WW</b>	<b>YW</b>	<b>MILK</b>			
EPD	EPD	EPD	EPD	EPD			
85	2.5	630	53	82	30		
<b>REA EPD</b>	<b>IMF EPD</b>	<b>CW EPD</b>	<b>Purchase \$</b>				
0.21	0.012	70					

<b>Lot 48</b>	<b>CH L1 Domino 2017</b> <i>From Chambliss Herefords</i>						
<b>BREED</b>	<b>DOB</b>		<b>TAT#</b>				
Hereford	3/2/22		2017				
<b>BW</b>	<b>BW</b>	<b>WW</b>	<b>YW</b>	<b>MILK</b>			
EPD	EPD	EPD	EPD	EPD			
65	3.1	610	55	86	27		
<b>REA EPD</b>	<b>IMF EPD</b>	<b>CW EPD</b>	<b>Purchase \$</b>				
0.45	0.008	70					

## Cattlemen's Choice Livestock Services

Make the smart choice and use  
Cattlemen's Choice for all your  
livestock needs!

- Show Feeds, Cattle Feed, Cattle Cubes
- Mineral
- Protein Tubs
- Cattle Equipment

Contact Travis Wiygul @ 352 207-3529



Florida Mineral  
Salt & Agricultural Products, LLC



<b>Lot 49</b>	<b>4448129</b> <i>From Chambliss Herefords</i>						
<b>BREED</b>	<b>DOB</b>	<b>TAT#</b>					
Hereford	5/4/22	2025					
<b>BW</b>	<b>BW EPD</b>	<b>WW</b>	<b>WW EPD</b>	<b>YW</b>	<b>YW EPD</b>	<b>MILK</b>	<b>MILK EPD</b>
80	1.3	558	60		89		28
<b>REA EPD</b>	<b>IMF EPD</b>	<b>CW EPD</b>	<b>Purchase \$</b>				

<b>Lot 50</b>	<b>44481829</b> <i>From Chambliss Herefords</i>						
<b>BREED</b>	<b>DOB</b>	<b>TAT#</b>					
Hereford	5/4/22	2032					
<b>BW</b>	<b>BW EPD</b>	<b>WW</b>	<b>WW EPD</b>	<b>YW</b>	<b>YW EPD</b>	<b>MILK</b>	<b>MILK EPD</b>
75	3.0	501	66		101		29
<b>REA EPD</b>	<b>IMF EPD</b>	<b>CW EPD</b>	<b>Purchase \$</b>				
0.37	0.008	73					

<b>Lot 51</b>	<b>CH L1 K Domino K2047</b> <i>From Chambliss Herefords</i>						
<b>BREED</b>	<b>DOB</b>	<b>TAT#</b>					
Hereford	8/29/22	2047					
<b>BW</b>	<b>BW EPD</b>	<b>WW</b>	<b>WW EPD</b>	<b>YW</b>	<b>YW EPD</b>	<b>MILK</b>	<b>MILK EPD</b>
78	2.2	733	71		105		28
<b>REA EPD</b>	<b>IMF EPD</b>	<b>CW EPD</b>	<b>Purchase \$</b>				
0.37	0.032	76					

<b>Lot 52</b>	<b>CH L1 Domino K2084</b> <i>From Chambliss Herefords</i>						
<b>BREED</b>	<b>DOB</b>	<b>TAT#</b>					
Hereford	10/12/22	2084					
<b>BW</b>	<b>BW EPD</b>	<b>WW</b>	<b>WW EPD</b>	<b>YW</b>	<b>YW EPD</b>	<b>MILK</b>	<b>MILK EPD</b>
71	1.4	713	50		78		32
<b>REA EPD</b>	<b>IMF EPD</b>	<b>CW EPD</b>	<b>Purchase \$</b>				
0.37	0.012	73					

<b>Lot 53</b>	<b>CH L1 Domino K2093</b> <i>From Chambliss Herefords</i>						
<b>BREED</b>	<b>DOB</b>	<b>TAT#</b>					
Hereford	10/21/22	2093					
<b>BW</b>	<b>BW EPD</b>	<b>WW</b>	<b>WW EPD</b>	<b>YW</b>	<b>YW EPD</b>	<b>MILK</b>	<b>MILK EPD</b>
82	3.1	775	53		81		33
<b>REA EPD</b>	<b>IMF EPD</b>	<b>CW EPD</b>	<b>Purchase \$</b>				
0.37	0.008	71					

<b>Lot 54</b>	<b>CH L1 Domino K2094</b> <i>From Chambliss Herefords</i>						
<b>BREED</b>	<b>DOB</b>	<b>TAT#</b>					
Hereford	10/25/22	2094					
<b>BW</b>	<b>BW EPD</b>	<b>WW</b>	<b>WW EPD</b>	<b>YW</b>	<b>YW EPD</b>	<b>MILK</b>	<b>MILK EPD</b>
73	2.7	645	45		73		30
<b>REA EPD</b>	<b>IMF EPD</b>	<b>CW EPD</b>	<b>Purchase \$</b>				
0.27	0.002	64					

<b>Lot 55</b>	<b>PH Victor 7120 P24B</b> <i>From Greenview Farms Inc.</i>						
<b>BREED</b>	<b>DOB</b>	<b>TAT#</b>					
Hereford	11/29/22	P24B					
<b>BW</b>	<b>BW EPD</b>	<b>WW</b>	<b>WW EPD</b>	<b>YW</b>	<b>YW EPD</b>	<b>MILK</b>	<b>MILK EPD</b>
75	2.4	630	53	1090	89		34
<b>REA EPD</b>	<b>IMF EPD</b>	<b>CW EPD</b>	<b>Purchase \$</b>				



<b>Lot 56</b>	<b>GV Southern Victor 41822</b> <i>From Greenview Farms Inc.</i>						
<b>BREED</b>	<b>DOB</b>	<b>TAT#</b>					
Hereford	10/27/22	B148					
<b>BW</b>	<b>BW EPD</b>	<b>WW</b>	<b>WW EPD</b>	<b>YW</b>	<b>YW EPD</b>	<b>MILK</b>	<b>MILK EPD</b>
77	3.6	612	52	940	78		22
<b>REA EPD</b>	<b>IMF EPD</b>	<b>CW EPD</b>	<b>Purchase \$</b>				
0.34		64					



**SOD FARM • HAY FARM • SEED & MULCH • CATTLE**



**Quality Bred  
Heifers for Sale**

**Larry & Tina Johns**

**Cell: 352-425-2992  
Office: 352-867-0296**

<b>Lot 57</b>	<b>GV Vic Leader 8012</b> <i>From Greenview Farms Inc.</i>					
<b>BREED</b>	<b>DOB</b>		<b>TAT#</b>			
Hereford	10/31/22		B171			
<b>BW</b>	<b>BW EPD</b>	<b>WW</b>	<b>WW EPD</b>	<b>YW</b>	<b>YW EPD</b>	<b>MILK EPD</b>
68	1.2	630	49	1121	71	30
<b>REA EPD</b>	<b>IMF EPD</b>	<b>CW EPD</b>	<b>Purchase \$</b>			
0.41	0.17	60				



Lot 57

<b>Lot 58</b>	<b>GV Churchill Victor 8001</b> <i>From Greenview Farms Inc.</i>					
<b>BREED</b>	<b>DOB</b>		<b>TAT#</b>			
Hereford	11/1/22		B187			
<b>BW</b>	<b>BW EPD</b>	<b>WW</b>	<b>WW EPD</b>	<b>YW</b>	<b>YW EPD</b>	<b>MILK EPD</b>
81	4.4	640	54	1152	89	27
<b>REA EPD</b>	<b>IMF EPD</b>	<b>CW EPD</b>	<b>Purchase \$</b>			
0.29	-0.05	57				



Lot 58

<b>Lot 59</b>	<b>GV Southern Victor 41822</b> <i>From Greenview Farms Inc.</i>					
<b>BREED</b>	<b>DOB</b>		<b>TAT#</b>			
Hereford	11/2/22		B1990			
<b>BW</b>	<b>BW EPD</b>	<b>WW</b>	<b>WW EPD</b>	<b>YW</b>	<b>YW EPD</b>	<b>MILK EPD</b>
73	3.2	630	56	1113	88	17
<b>REA EPD</b>	<b>IMF EPD</b>	<b>CW EPD</b>	<b>Purchase \$</b>			
0.5	0.1	68				



Lot 59



Lot 56

<b>Lot 60</b>	<b>GV Elder Victor 7120</b> <i>From Greenview Farms Inc.</i>					
<b>BREED</b>	<b>DOB</b>		<b>TAT#</b>			
Hereford	12/9/22		B290			
<b>BW</b>	<b>BW EPD</b>	<b>WW</b>	<b>WW EPD</b>	<b>YW</b>	<b>YW EPD</b>	<b>MILK EPD</b>
74	1.4	610	49	1060	82	30
<b>REA EPD</b>	<b>IMF EPD</b>	<b>CW EPD</b>	<b>Purchase \$</b>			
0.43	0.22	68				




Lot 60

**Mid Florida Fence**

**427-8886**

**www.MidFloridaFence.net**

**NORTH EAST**  
**AUTO & TRUCK**  
**SERVICE**

 2140 NE 36th Ave, STE 300-1  
Ocala, FL 34470

 Mon-Thurs: 7:30am-5:30pm, Fri: 7:30am-  
Noon  
Sat-Sun: Closed

**(352) 604-5648**



Thank you Florida Cattlemen for allowing me to serve you!

Christian Keen, DVM

352-391-0374

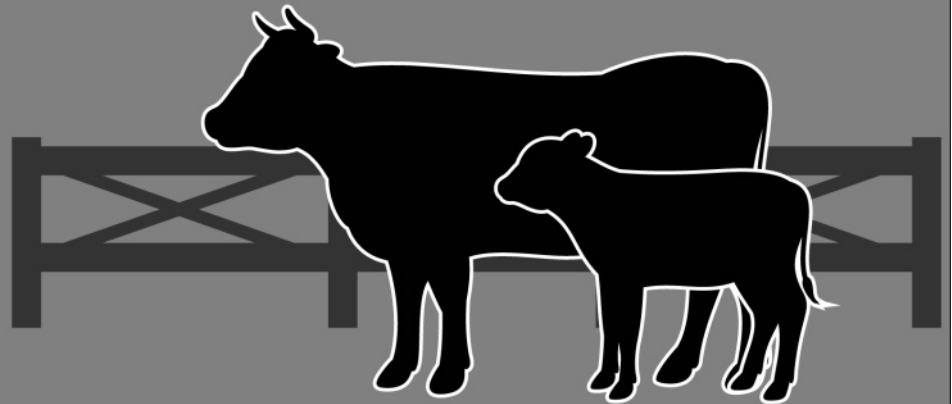
# LONDON FARM AND CATTLE LLC

Quality Beef Cattle and Hay

## BRENT LONDON

8061 NE Jacksonville Rd  
Ocala, FL 34479

brentlondon@me.com  
352-622-5774  
352-615-2488 cell  
352-622-4774 fax



New  
Great  
Rates  
for Good  
Drivers.

[ffbic.com](http://ffbic.com)



**352-237-2124**

Tom Cothron, Farm Bureau  
5800 SW 20th St.  
Ocala, FL 34474

FLAUNP45020

**MARTY SMITH**  
ATTORNEY AT LAW

---

1309 SE 25<sup>TH</sup> LOOP, STE 101  
OCALA, FL 34471  
(352)502-5811



Stephen Liles, owner • Corey Liles, owner  
(352) 622-7007 • lilescustomtrailers@yahoo.com  
4950 North US Hwy 441 • Ocala, Florida 34475



MARION COUNTY CATTLEMEN'S ASSOCIATION  
*proudly supports the*



There is no  
*magical* show  
stick  
or *lucky* brush.

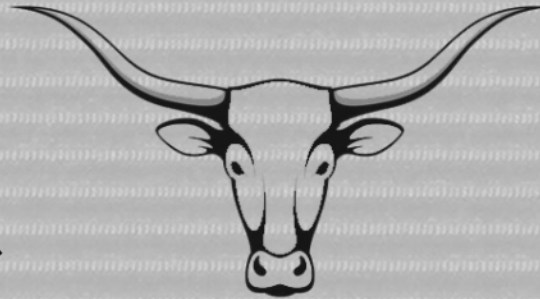


What there is, is hard work,  
confidence, passion and  
a desire to *succeed*

# INDEX TO ADVERTISERS

*Thank You for your Support!*

3G Cattle Company .....	13	Mayo Fertilizer .....	6
Van Akin @ Foxfire Realty .....	15	Mid-Florida AG Services .....	11
Advanced Tire Service .....	Inside Front Cover	MIDFLORIDA Credit Union .....	Back Cover
Barnett Angus Ranches .....	10	Mid-Florida Fence .....	19
Cattlemens Choice Livestock Services .....	17	Northeast Auto & Truck Service .....	20
Cracker Land and Cattle Company .....	24	Ocala Stockyard .....	5
Farm Bureau Insurance .....	21	Pursuit Veterinary Services .....	20
KAP Design Group .....	Inside Back Cover	Seminole Feed Store .....	1
Larry's Outdoor Services, LLC .....	18	Marty Smith Attorney at Law .....	22
LeFils Farms LLC .....	14	Southern Pro Fence .....	8
Liles Custom Trailers, LLC .....	22	Southern Pro Roofing, LLC .....	16
London Farm and Cattle LLC .....	21	SunMountain Cattle .....	7
Marion County Cattlemen's Association .....	12, 23		



**CRACKER LAND AND CATTLE CO.**  
**HUNTER KETCHAM**

**295 SE BAILEY ST.**  
**LAKE CITY, FL 32024**

**OFFICE: (386) 758-2485**  
**MOBILE: (386) 365-8262**



"Conception to Reality"

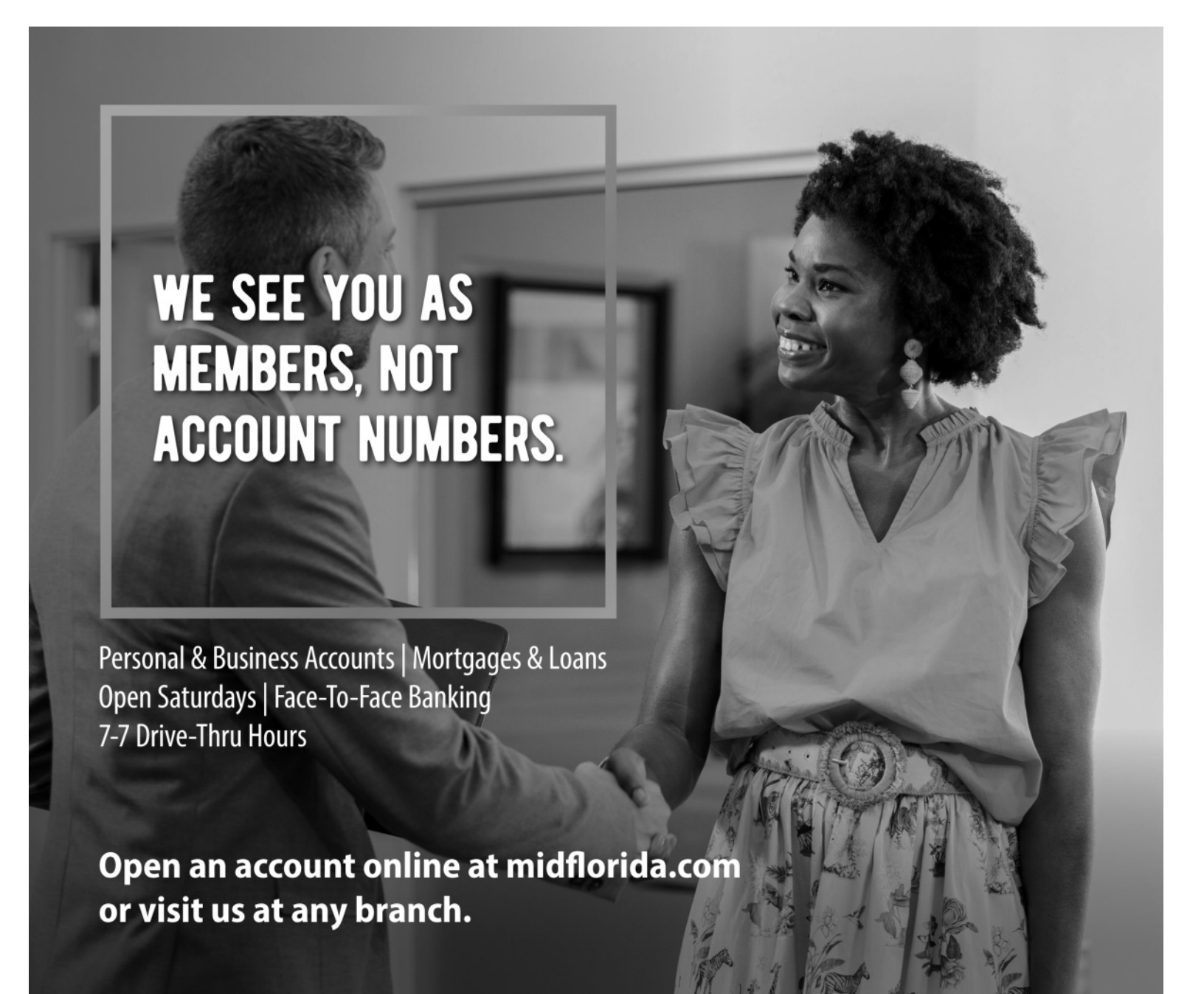
State Certified General Contractor

- DESIGN SERVICES
  - ADDITIONS / REMODELS / RENOVATIONS
- RESIDENTIAL / COMMERCIAL / CONTRACTOR



[www.kapdesigngroup.com](http://www.kapdesigngroup.com)  
**352-572-7454**

CGC1514540



**WE SEE YOU AS  
MEMBERS, NOT  
ACCOUNT NUMBERS.**

Personal & Business Accounts | Mortgages & Loans  
Open Saturdays | Face-To-Face Banking  
7-7 Drive-Thru Hours

**Open an account online at [midflorida.com](https://midflorida.com)  
or visit us at any branch.**

**YOUR LIFE.  
YOUR MONEY.  
YOUR CREDIT UNION.**

**MIDFLORIDA**  
*Florida's community credit union®*

Insured by NCUA.



NMLS# 417627