

70th Annual Ocala Graded Bull Sale

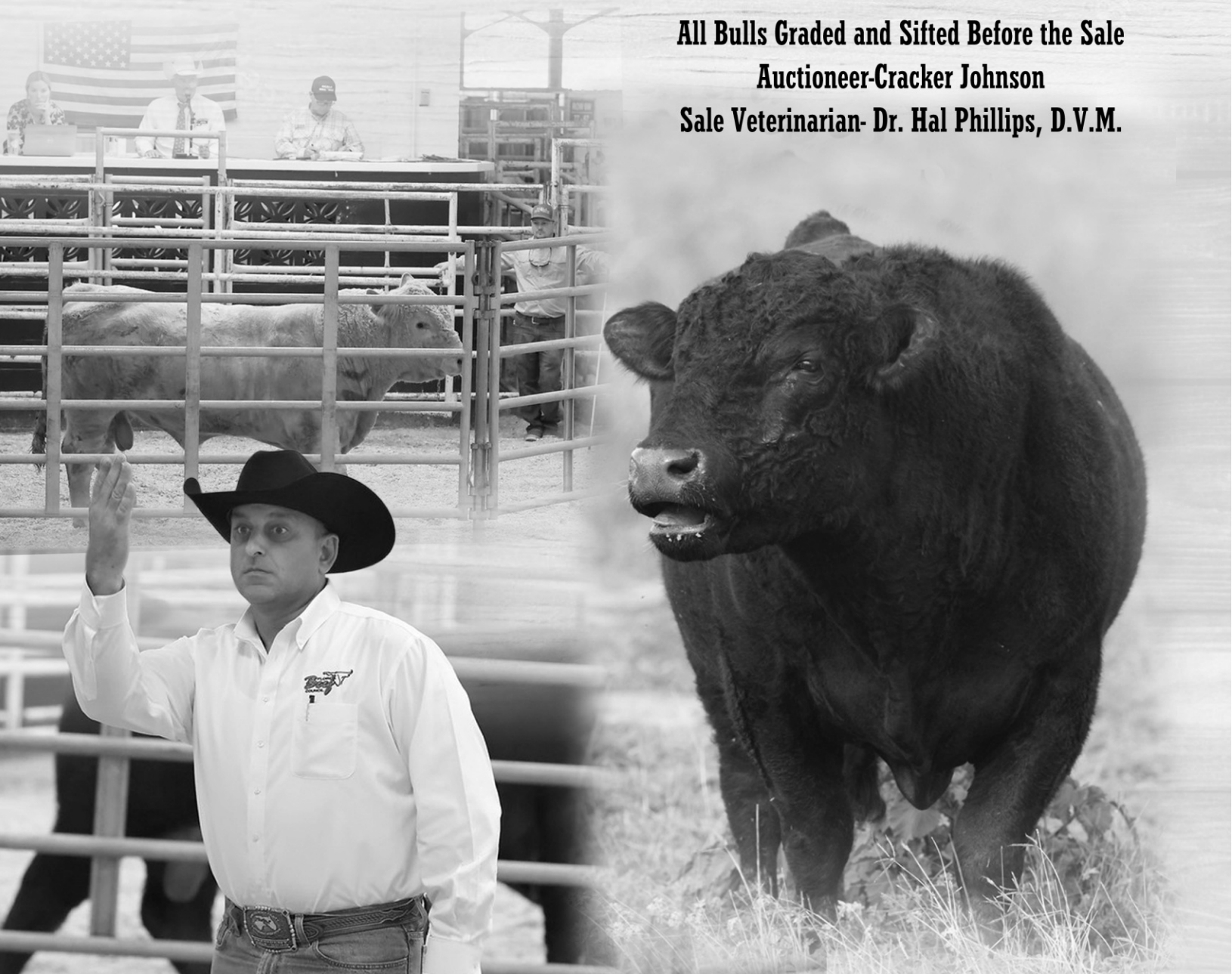
Tuesday, October 14, 2025 • 1 pm EST
Southeastern Livestock Pavilion • Ocala, Florida

"Where Quality is Plainly Marked"

All Bulls Graded and Sifted Before the Sale

Auctioneer-Cracker Johnson

Sale Veterinarian- Dr. Hal Phillips, D.V.M.



BARNETT

ANGUS RANCHES

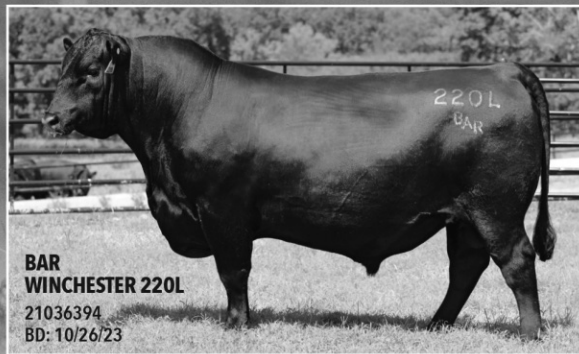
*Making a difference in the beef business isn't an accident.
It's a deliberate process. It's how legacies begin.*

6th Annual BAR Production Sale

Saturday, November 1, 2025 • 12 Noon

At the NEW BAR sale facility • GPS: 1832 Lexington Road, Washington, GA 30673

Selling 115 Two-Year-Old Bulls ■ 8 Yearling Bulls
14 Open Heifers ■ 18 Fall Calving Females ■ 50 Commercial Heavy Bred Heifers



**BAR
WINCHESTER 220L**
21036394
BD: 10/26/23

CED	BW	WW	YW	Milk	SC	CW
+4	+1.2	+85/15%	+152/10%	+21	+2.02/3%	+79/10%
MARB	RE	\$M	\$W	\$G	\$B	\$C
+1.16/20%	+0.59	+70	+80/20%	+77/20%	+196/15%	+324/15%

One of two flush brothers by the very popular ST Genetics sire Poss Winchester. He has performed well at every measuring point with a massive 902 lb. adjusted weaning weight and 1,377 pound adjusted yearling weight. Several maternal brothers from his proven donor dam F001 sell!



**BAR
ARCHITECT 222L**
21035478
BD: 10/22/23

CED	BW	WW	YW	Milk	SC	CW
+10/25%	+1.1	+107/1%	+173/1%	+19	+1.60/15%	+85/3%
MARB	RE	\$M	\$W	\$G	\$B	\$C
+1.05/25%	+0.58	+82/20%	+105/1%	+70/25%	+195/15%	+335/10%

One of two flush brothers sired by the Genex standout S Architect 9501. His well-balanced EPD profile starts with a tremendous birth to yearling spread, and he ranks as one of the top five bulls in the offering for WW EPD. 222L has 15 traits in the top 25% of the breed!

SIMS
Plus LLC

To request a sale book:

Mark C. Sims • (580) 595-0901
simsplusllc@gmail.com • www.SimsPlusLLC.com

CCI
LIVE

Watch the sale
and bid live online
at CCI.Live



For information about Barnett Angus Ranch bulls & females, please contact:

BARNETT ANGUS RANCHES

Wilkes Barnett (706) 401-9157 • Chris Goldman (706) 401-3120 • CJ Goldman (706) 401-2462
1685 Lexington Rd. • Washington, GA 30673 • www.BarnettAngus.com

Producing Quality Angus Cattle for More than 75 Years

70TH ANNUAL OCALA GRADED BULL SALE

Tuesday, October 14, 2025 • Southeastern Livestock Pavilion, Ocala, Florida

SCHEDULE OF EVENTS

Monday, October 13, 2025

8 amGrading of Bulls

Tuesday, October 14, 2025

MorningViewing of Bulls

12 NoonLunch

1 pm**70th Annual Ocala Graded Bull Sale**

AUCTIONEER

Cracker Johnson • Chiefland, Florida • (352) 535-5320 • License #AU2947

SALE LOCATION

Southeastern Livestock Pavilion

2232 NE Jacksonville Road • Ocala, Florida 34470

SALE VETERINARIAN

Dr. Hal Phillips, DVM • Morriston, Florida • (352) 843-3687

UNDERSTANDING THE BASICS OF EPDS...Pages 2-4

By Fernanda M. Rezende, Caitlin L. Bainum, Joseph H. Walter, Timothy W. Wilson

OCALA BULL SALE CONSIGNORS...Pages 6-8

Barnett Angus Ranches – Washington, Georgia • Lots 67-70

Buck Mountain Cattle Company – Ocala, Florida • Lots 26-29

Michael Clark – Ocala, Florida • Lot 63

Crazy Acres – Ocala, Florida • Lots 30, 31

Country Boy Farms – Edgefield, South Carolina • Lots 53, 54

Dry Branch Angus – Dawsonville, Georgia • Lots 64-66

Greenview Farms Inc. – Screven, Georgia • Lots 39-42, 45, 46

Little W Farm – Lebanon, Tennessee • Lots 17-25

McMichael Angus Farm – Monticello, Georgia • Lots 56-63

JD Miller – Edgefield, South Carolina • Lots 43, 55

MO Brangus – Sorrento, Florida • Lots 32-38

Mueller Charolais – Altenburg, Missouri • Lots 6-16

Triple B Charolais – Lebanon, Tennessee • Lots 1-5

White's Hereford Farms – Scotts Hill, Tennessee • Lot 47-52

TERMS & CONDITIONS...Page 9

OCALA BULL SALE LOTS...Pages 11-24

**We know what it takes to produce and market the world's best beef.
Put our experience to work for you.**



Cattle Sale - Monday @ 1:00 p.m.

Goat and Hog Sale - 1st and 3rd Friday of each month @ 12:00 p.m.



Where the highest bid wins!

352-732-4454



Understanding the Basics of EPDs

Fernanda M. Rezende, Caitlin L. Bainum, Joseph H. Walter, and Timothy W. Wilson

When selecting herd sires, producers often give consideration to color, soundness, structure, body condition, temperament, and genetics. Although expected progeny differences (EPDs) provide an excellent genetic description of a bull, many producers have difficulty understanding what EPDs mean and how to use them to drive the genetic advancement of the herd. The purpose of this publication is to provide basic concepts and practical examples to help beef producers and their advisors make informed selection decisions using EPD information.

WHAT DOES EXPECTED PROGENY DIFFERENCE (EPD) MEAN?

Expected progeny difference is the genetic description of a bull derived from data from its calves (progeny), its ancestors, and full and half siblings. The EPD represents the average genetic contribution of a specific bull to its progeny (i.e., what is transmitted from an individual to its progeny) and is expressed in the form of deviations from a reference population.

Half of the genetic material is passed on from parent to progeny through gametes (i.e., sperm and egg cells). Hence, only half of the independent effects of all genes affecting one trait are inherited. However, each offspring receives a random sample of its parent's genes, and some samples are better than others. EPDs are a representation of the average value of an individual's gametes for a specific trait. Therefore, EPDs can also be interpreted as the average value of an individual's contribution to its offspring's performance.

EPD values provide an estimate of how a bull's progeny are expected to perform relative to the progeny performance of a group of animals used as a point of reference in the genetic evaluation. This group of animals, formally called genetic base, has the average of their EPDs set as zero for all traits. Thus, all other EPDs are expressed as deviation from this average, explaining positive and negative EPD values that are reported. For instance, if a particular bull has an EPD of +1.6 lb for birth weight, and we are careful to randomly mate him to a cross-section of cows, not just those with especially heavy or light birth weight, we can expect the birth weight of its progeny to average 1.6 lb heavier than the average birth weight of the progeny from the genetic base. The genetic base can broadly be explained as a historic group of animals, such as all evaluated animals born at the onset of a 5- or 10-year period, used as a baseline.

Traits reported by a breed association may vary in number, with new traits added periodically. Typically, EPDs for growth traits such as birth weight (BW), weaning weight (WW), yearling weight (YW), and

milk are often reported for beef cattle. Depending on the breed, additional traits related to carcass and ultrasound data may also have estimated EPDs.

EPDs indicate if a bull's progeny are expected to perform above or below compared to the progeny performance of the average bull in that breed. Breed averages can be expressed as the average of the EPDs of current sires (e.g., registered animals with at least one calf record in the herd book), main sires (e.g., sires with at least 35 yearling progeny weights), and non-parents (e.g., registered animals with no current progeny in the genetic evaluation). They are published by various breed associations at least semiannually.

Notably, EPDs are exceptional tools for comparing and ranking candidates for selection, because the difference between the EPDs of two animals is an estimate of the difference expected to be observed in the performance of their progeny.

HOW RELIABLE IS EPD?

The EPD values are always accompanied by an associated measure of reliability named accuracy. The accuracy value, expressed numerically between zero and one, is a function of heritability and is impacted by the number of progeny and ancestral records available. Therefore, a specific bull has a more reliable EPD for birth weight than for calving ease because birth weight has higher heritability. Likewise, an individual with many progeny has a more reliable EPD for any given trait than an individual with few or no progeny. As the number of progeny reported to a breed association increases, the accuracy values will move closer to one.

The accuracy values can be viewed as a percentage. For example, a value of 0.39 could be seen as 39% accurate while a value of 0.98 could be viewed as 98% accurate. A low accuracy value indicates that a sire may be young, or that few calves have been reported to the breed association. As the EPD value is adjusted to more accurately define the genetic capabilities ("true" progeny difference) of the bull, the accuracy values increase. In other words, as additional calves are registered each year, EPD values for a bull are adjusted and the accuracy value increases, which reflects in lower expected change or potential deviation between the EPD and the "true" progeny difference.

Selection must be based on EPD values, and accuracy should be used as a guide to decide how intensively an individual animal should be used in the case of change (up or down) in its EPD value. If accuracy is low (e.g., young bull with few or no progeny), the producer assumes more risk that the animal's EPD is not a perfectly accurate prediction of

genetic merit. Nevertheless, good reasons for using young bulls include their higher EPD values and lower cost of the bull or semen from the bull when compared to proven bulls. When selecting young bulls, producers can mitigate the risk by using a larger number of sires and setting a more stringent threshold (e.g., purchasing bulls or semen from bulls in the top 10% of available young bulls). This approach ensures higher accuracy of the EPDs of the group of young bulls than the accuracy of any one of these young bulls' EPDs. In addition, if one young bull is worse than the others, that young bull will sire a smaller fraction of calves. Fine-tuning the selection based on morphological and functional attributes of individuals selected by EPDs is still possible.

HOW DO I USE EXPECTED PROGENY DIFFERENCE?

Individual EPD values are negligible, but they are a powerful selection tool when used to compare an individual to its breed average EPDs and to rank candidates for selection. For example, if the EPDs listed in Table 1 for bull A were for an Angus bull, how would it compare to its breed average (Table 2) for birth weight (BW)? How would calves from bulls A, B, and C be expected to perform for birth weight?

Bull A has a BW EPD of +0.6 with 98% accuracy. When comparing the BW EPD of +0.6 to the breed average of +1.2, bull A would be expected to produce calves with lower birth weights than the average bull in the Angus breed ($0.6 - 1.2 = -0.6$, or 0.6 lb lower than the breed average). Compared to its counterparts B and C, bull A would be expected to produce the heaviest calves at birth. Indeed, bull A is expected to produce calves 1.4 lb and 3.4 lb heavier at birth than bull B [$0.6 - (-0.8) = 1.4$ lb heavier than bull B] and bull C [$0.6 - (-2.8) = 3.4$ lb heavier than bull C], respectively.

It is also important to consider the accuracy value, especially when selecting a sire that will breed heifers, since little or no information may be available on the female genetic contribution to the progeny. Bull A has the highest accuracy value for BW, 0.98 or 98%, so it can be anticipated that this bull's progeny will have birth weight differences close to the expected value.

If bull A was a Charolais rather than Angus, the results would differ from those in the first example. Using the same +0.6 BW EPD, which is higher than the Charolais breed average of -0.4, would result in calves from bull A weighing 1 lb more than the mean birth weight of calves from an average bull in the Charolais breed [$0.6 - (-0.4) = 1$ lb heavier than the breed average].

GENOMIC-ENHANCED EPDS

Proven bulls have more reliable EPDs than young genomic-tested bulls due to a higher number of available progeny records. However, the latter tend to have greater EPD values due to genetic progress over generations. Genomic-enhanced EPDs have become available to the beef industry and provide for unproven bulls the same amount of accuracy as

if they had on average 20 progeny records, depending on the trait of interest. This is possible through the incorporation of genomic or DNA test information in the traditional genetic evaluation that uses pedigree and performance records. When evaluating young bulls with low accuracy values and no available genomic EPDs, an alternative is to include EPD information from their sire, dam, and grandsire in the decision-making process with an understanding that ancestral EPDs are not as accurate of a selection tool as genomic EPDs. If available, genomic EPDs provide a more accurate estimate of a young bull's genetic potential as a sire than ancestral EPDs and should be used for animal selection. It is also advised to use a group of young bulls, as the accuracy of the group EPD is greater than the accuracy of each individual bull's EPD. The accuracy of a group of young genomic-tested bulls is given by $Acc = 1 - (1 - \text{average acci})/n$, where acci is the average accuracy of individual bulls and n is the number of bulls in the group. For example, if the average accuracy of individual young bulls is 50%, the accuracy of EPD for a group of 3 bulls is about 83% [$1 - (1 - 0.5)/3 = 0.83$].

ACROSS-BREED EPD COMPARISONS

In many operations, producers opt for a crossbreeding program to take advantage of heterosis: performance advantages of the resulting crossbred calf crop compared to the average of the parental breeds. This can present a challenge when utilizing within-breed estimated EPDs for genetic merit comparison of bulls from different breeds because breed associations often use different national evaluation programs and differences exist in the genetic base across breeds. In crossbred operations, producers must be capable of comparing sires across breeds by adding appropriate adjustment factors to the EPD produced in the genetic evaluations for each breed. Across-breed EPD (AB-EPD) adjustment factors were developed to help producers select a sire for their goals with crossbred cattle.

AB-EPD factors are published yearly for 18 different breeds by the U.S. Meat Animal Research Center (MARC) in Clay Center, NE, and made available on the BIF website (www.beefimprovement.org). If the three bulls listed above (Table 1) are Angus, Brahman, and Charolais, respectively, the across-breed adjustment factors (Table 3) can be used to convert noncomparable within-breed EPDs to comparable across-breed EPDs (Table 4).

Remember that EPDs are not perfect when comparing bulls even within a breed; therefore, AB-EPDs are less accurate when comparing animals of different breeds. Many breed associations have adopted an alternative: the implementation of multi-breed genetic evaluations, which combines records from purebred and crossbred animals and accounts for direct and maternal heterosis and breed effects. Multi-breed genetic evaluations yield more accurate EPD predictions by virtue of data volume and permit direct comparison of EPDs from animals of different breed and breed composition. When EPDs from multi-breed

(continued on next page)

evaluations are available, they are the most effective to commercial producers who are comparing and purchasing bulls of more than one breed to use in the crossbreeding system.

TAKE-HOME MESSAGE

In summary, EPDs are an excellent means to evaluate the expected genetic potential of a sire. Thus, EPDs are exceptional tools for comparing and ranking candidates for selection. Producers who use EPDs must

consider that they are designed to predict expected progeny differences in performance and not actual bull performance. The adjustment factors may serve as a valuable tool for producers to more appropriately compare within-breed EPDs of bulls from different breeds for a crossbreeding program. Multi-breed EPDs are the most effective and accurate alternative for comparing the genetic merit of bulls from different breeds or breed combinations.

Table 1. Estimates of EPD and accuracy values.

Animal	BW acc	WW acc	YW acc	Milk acc
Bull A	+0.6 0.98	+60 0.97	+109 0.96	+27 0.95
Bull B	-0.8 0.83	-1 0.85	+1 0.73	+10 0.78
Bull C	-2.8 0.68	+56 0.63	+118 0.58	+38 0.31
BW: Birth weight. WW: Weaning weight. YW: Yearling weight. acc: Accuracy.				

Table 2. Breed average EPDs for Angus and Charolais.

Breed	BW	WW	YW	Milk
Angus	+1.2	+59	+105	+26
Charolais	-0.4	+57	+104	+23
BW: Birth weight. WW: Weaning weight. YW: Yearling weight.				

Table 3. MARC adjustment factors to estimate across-breed EPDs.

Breed	BW	WW	YW	Milk
Angus	0.0	0.0	0.0	0.0
Brahman	9.0	60.2	24.0	12.4
Charolais	6.4	5.5	-23.9	-1.8

Table 4. Example of using across-breed adjustment factors to convert noncomparable within-breed EPDs to comparable across-breed EPDs.

Animal	Breed		BW	WW	YW	Milk
Bull A	Angus	AB adj. factors ¹	0.0	0.0	0.0	0.0
		EPD ²	+0.6	+60	+109	+27
		AB-EPD ³	+0.6	+60	+109	+27
Bull B	Brahman	AB adj. factors ¹	9.0	60.2	24.0	12.4
		EPD ²	-0.8	-1	+1	+10
		AB-EPD ³	+8.2	+59.2	+25.0	+22.4
Bull C	Charolais	AB adj. factors ¹	6.4	5.5	-23.9	-1.8
		EPD ²	-2.8	+56	+118	+38
		AB-EPD ³	+3.6	+61.5	+94.1	+36.2

¹ AB adj. factors are the MARC across-breed adjustment factors from Table 3.
² EPDs are the EPD values from within-breed genetic evaluation.
³ AB-EPDs are the across-breed EPDs after adjustment factors are applied to within-breed EPDs.

Cattlemen's Choice Livestock Services

Make the smart choice and use
Cattlemen's Choice for all your
livestock needs!

- Show Feeds, Cattle Feed, Cattle Cubes
- Mineral
- Protein Tubs
- Cattle Equipment

Contact Travis Wiygul @ 352 207-3529



Florida Mineral
Salt & Agricultural Products, LLC



SHOW STEERS & HEIFERS AVAILABLE



Madaline Evans - 352-322-1158 | Amanda Permar - 352-445-4287
Savannah Dominey - 352-322-1155

19325 W Hwy 40 - Dunnellon, FL 34432



OCALA BULL SALE CONSIGNORS

"The Nation's Oldest Continuous Graded Bull Sale"

Barnett Angus Ranches – Washington, Georgia • Lots 67-70

Barnett Angus has been producing registered Angus bulls since 1947. We are proud to be in our 76th year of operating a continuous herd. We are a forage-based operation specializing in raising 2-year-old bulls for the commercial rancher. We firmly understand how to develop bulls that are physically sound and backed by great genetics and pedigrees that hold up under pressure. Wilkes Barnett, owner: 701-401-9157. Chris Goldman, herdsman: 706-401-3120.

Buck Mountain Cattle Company – Ocala, Florida • Lots 26-29

Buck Mountain Cattle is a small cow/calf operation and is owned by the Dustin Enochs family in Summerfield, FL. Starting 11 years ago, we now have approximately 90+ head of cattle. We own an Angus/Hereford commercial herd as well as a registered Simmental herd. We raise commercial calves as well as registered Simmental heifers, steers, and bull calves, focusing on growing the registered Simmental herd for the industry in Florida. We have had great success thus far and have seen a lot of potential in the Simmental breed. Our pure-bred cows & bulls seem to thrive here in Florida and do extremely well when crossing with other cattle breeds. We primarily want to continue to increase our registered herd and will continue to sell more heifers, bulls, and steers in the coming years.

Crazy Acres – Ocala, Florida • Lots 30, 31

Crazy Acres registered Brahman and AOB show cattle. Our goal is to produce high-quality docile cattle that do well in the show ring and on the rail. We strive to breed high-yielding and high-quality carcass value into our herd..

Country Boy Farms – Edgefield, South Carolina • Lots 53, 54

LeFils Farms



352-258-5524

Peanuts • Hay • Molasses

FERTILIZER • LIME • DOLOMITE • PESTICIDE • HERBICIDE



Dry Branch Angus – Dawsonville, Georgia • Lots 64-66

Greenview Farms Inc. – Calhoun, Georgia • Lots 39-42, 45, 46

On 3,500 acres in Southeast Georgia, Greenview Farms, Inc. is the oldest continuously active Polled Hereford breeder in the state and has been offering seedstock to commercial and purebred breeders since 1942. The herd consists of 400 mama cows, with bulls and heifers being developed for sale. We run between 800 and 1,000 head total. In 1981, Greenview started breeding half its herd to Brahman bulls, producing F1 Braford, which are in high demand in the Southeast. Please visit our website www.greenviewfarms.net • Jonny Harris, Owner

JD Miller – Edgefield, South Carolina • Lots 43, 55

Little W Farm – Lebanon, Tennessee • Lots 17-25

Mike and Connie Watkins own and operate Little W Farm in Lebanon, TN, along with their daughters Kellie and Scott Porter (son Clifton) and Kristie and Jarrod Buhler (son Brayson). Mike and Connie run a family farm with roots in the Charolais breed. They offer a wide range of bloodlines. Their farm produces bulls that have been purchased all across the United States, and females that are competitive in the show ring. What began as a 4-H beef cattle project has now turned into a family business providing quality Charolais cattle with meat, milk, and good disposition. Make plans to visit our annual sale at the farm on the first Saturday in April each year. Check out our website: littlewfarm.com • Mike & Connie Watkins

Michael Clark – Ocala, Florida • Lot 63

McMichael Angus Farm – Monticello, Georgia • Lots 56-62

Mueller Charolais – Altenburg, Missouri • Lots 6-16

It's always a pleasure going to the Ocala Bull Sale. We started raising Charolais cattle in 1964. We have been performance testing since 1983. We work on calving ease, performance, and eye appeal, along with soundness and disposition.

(consignors continued on next page)



Stephen Liles, owner • Corey Liles, owner
(352) 622-7007 • lilescustomtrailers@yahoo.com
4950 North US Hwy 441 • Ocala, Florida 34475



MO Brangus – Sorrento, Florida • Lots 32-38

We have been raising Brangus cattle since 1983. We stand behind the bulls in this sale. We pay close attention to muscle, fertility, soundness, sheath, testicular and disposition. These 2-year-olds are structurally sound with muscle and are very even-tempered. They are sound, functional and perform in the heat and humidity of Florida. We have saved our best because we want you to come back next year and in the years to come. We believe in culling bulls that are not structurally sound. It is our desire at MO Brangus to offer bulls for sale that will make money for you and that you will be proud to own. After 40 years of developing better bulls, this is the best group we have ever had.

Triple B Charolais – Lebanon, Tennessee • Lots 1-5

Triple B Charolais is owned by Bill, Brenda, and JW Baird. We appreciate the opportunity to bring bulls to Ocala from Middle Tennessee. We at Triple B Charolais are overjoyed to be bringing bulls for our 20th year. We have strived to produce bulls that work in Florida and help make a profit for their owners. Again, this year we have purebred Charolais and percentage Charolais (Charolais x Angus). We hope to build on our relationships with past buyers and new buyers of our bulls. At Triple B, we use AI and then cover our cows with bulls that are known for growth and maternal values. If you are new to the sale, stop by and we would enjoy getting to meet with you. And if you bought bulls from us before, please stop by and give us feedback on the calf crops so we can continue to improve. See ya in October!

White's Hereford Farms – Scotts Hill, Tennessee • Lot 47-52

White's Hereford Farms, Hereford cattle, Scotts Hill, TN, raises quality Hereford herds in Henderson County in West Tennessee near Jackson. With over 25 years of breeding experience, the farm is part of the American Hereford Association and follows well-established health screening protocols for genetic soundness and disease prevention.

The family-run operation began in the 1990s and has focused on breeding cattle with gentle temperaments and feed efficiency. Animals graze on managed pastures, and calves are gently handled from birth to encourage calm behaviors. Living facilities include sheltered barns and open fields that promote natural behaviors while ensuring protection during colder months. Routine testing for bovine viral diarrhea and Johne's disease is part of their health program. This hands-on care and health focus supports steady weight gain and beef quality. White's Hereford Farms maintains detailed records and provides ongoing guidance on herd management and feeding strategies.

You didn't settle at the sale, so don't hinder your herd health.



SEMINOLE FEED STORE

Drop in so we can meet your needs!

Ocala • 315 NE Watula Ave. • 352-732-4143

40 West • 5740 W. Hwy 40 • 352-237-3222

Bellevue • 5904 SE Hames Road • 352-245-9280

OCALA BULL SALE TERMS & CONDITIONS

"The Nation's Oldest Continuous Graded Bull Sale"

1. All bulls must be accompanied by Official Certificate of Veterinary Inspection issued by accredited veterinarian showing cattle are in good health and have met the following health requirements:
 - a. Tuberculosis- Bulls may be entered in the sale without a tuberculin test provided they are identified on health certificate as originating in a tuberculosis free state. All other bulls must be negative to tuberculin within 30 days of the date of the sale. (Bulls moving to FL from other states should comply with Florida Chapter 5C-3, F.A.C.)
 - b. Brucellosis- Bulls may be entered in the sale without a brucellosis test provided they are identified on health certificates as originating in certified brucellosis free herds. All other bulls must be negative to brucellosis test within 30 days of date of sale.
 - c. PI – BVD and Trichomoniasis (State Law) – All bulls must be accompanied by a negative Persistently Infected Bovine Virus Diarrhea (P.I. BVD- test.
 - d. Vibriosis and Trichomoniasis – All bulls which have been exposed to females must be accompanied by negative vibriosis and trichomoniasis tests.
- c. All vehicles transporting bulls to the sale must be properly cleaned and disinfected.
2. Each sale lot will be sold separately to the highest bidder. The sale order will be determined the day before the sale.
3. Any changes from information in the catalog will be announced from the auction block and will take precedence.
4. The auctioneer selling will settle any dispute as to bids by declaring all bids off and reselling the animal(s) in question.
5. Each animal will be at the seller's risk until sold, but as soon as sold will be at the purchaser's risk.
6. Terms of sale are cash, and payment is due from purchaser upon termination of the sale. Purchased animals will not be delivered until settlement has been made and released by barn superintendent.
7. All persons who attend the sale do so at their own risk. This association (Marion County Cattlemen's Association); assumes no liability, legal, or otherwise, for the safety of the building or premises, or for the behavior of or future uselessness of the animals. This association acts only as an agent for the consignors and assumes no responsibility, legal, or otherwise, to the public in general or between buyer and seller.
8. Bulls will be graded by a committee composed of four outstanding cattlemen and a representative of the University of Florida.
9. All bulls are guaranteed breeders by the consignor. In addition, all bulls must pass breeding soundness examination by an accredited veterinarian within 30 days of the date of the sale, and a certificate showing acceptable breeding soundness shall accompany all bulls to the sale.



ADVANCED

TIRE SERVICE

Your Advanced Team!

Family-owned and operated since 2011!

We're your local Goodyear, Michelin, and Bridgestone dealer. Advanced Tire has five (5) locations to serve you in Brooksville, Ocala, Gainesville, and Lake City.

Don't settle for less. Bring your vehicle needs to the one who is 'Advanced'!

**Advanced Tire Service,
'Where We Care to Do it Right!'**



GOODYEAR
NATIONAL ACCOUNTS



GOODYEAR
RETREADS

OCALA
2418 E Silver Springs Blvd.
Ocala, FL 34470

OCALA
2199 NW 10th Street
Ocala, FL 34475

BROOKSVILLE
1212 Ponce De Leon Blvd.
Brooksville, FL 34601

LAKE CITY
837 E Duval Street
Lake City, FL 32055

GAINESVILLE
912 N Main Street
Gainesville, FL 32601



FLEET SERVICES

Our TIA-certified technicians and 24/7/365 commercial tire emergency roadside technicians get the job done! From Fleet Inspections, New Tires, Goodyear Retreading, Mounted Wheel Programs, Heavy Truck Alignment and Tire Balance, Mechanical Repairs, PM and DOT Inspections services to Goodyear National Account and Government Pricing, we are your Advanced Team!

MECHANICAL SERVICES

Our diverse offering to our customers helps drive your success! Our 'Advanced' automotive service and repair technicians make up your One-Stop Shop! We've got you covered: Alignments, Brakes, Steering/Suspension, Shocks/Struts, Drivability/Electrical/Engine Diagnostics, Oil Change Services, Fluid Exchanges, Engine/Transmission/Rear End replacements, and more.

MED DUTY/FARM/OTR TIRE SALES AND SERVICE

Farm equipment, construction equipment, tractor/trailers, and more, our team of experts from Hernando County to the Georgia/Florida line can keep you rolling. Increase profitability with our expedited 'Advanced' service repairs and replacements.

FORKLIFT TIRE SALES & SERVICE

Our 'On-site' forklift tire service keeps your job crew working! We come to you with a mobile press, an ideal option to save you time and money, avoiding downtime. On-site service, professional workmanship, and quality tires are extended to you quickly and efficiently. Limit your downtime with our 'Advanced' lift tire services!

352-236-8825

Lot 1 BBB Precision 2309 <i>From Triple B Charolais</i>							
BREED		DOB		TAT#			
Charolais		6/21/23		2309			
BW	BW EPD	WW	WW EPD	YW	YW EPD	MILK	MILK EPD
79	-0.7	569	56	1185	104	17	
REA EPD		IMF EPD		CW EPD		Purchase \$	
0.61		0.019		18			



Lot 1

Lot 2 BBB Precision 2310 <i>From Triple B Charolais</i>							
BREED		DOB		TAT#			
Charolais		6/29/23		2310			
BW	BW EPD	WW	WW EPD	YW	YW EPD	MILK	MILK EPD
78	0.6	579	56	1195	103	17	
REA EPD		IMF EPD		CW EPD		Purchase \$	
0.57		0.025		21			



Lot 2

Lot 3 BBB Precision 2311 <i>From Triple B Charolais</i>							
BREED		DOB		TAT#			
Charolais		7/12/23		2311			
BW	BW EPD	WW	WW EPD	YW	YW EPD	MILK	MILK EPD
80	-0.5	639	64	1155	115	19	
REA EPD		IMF EPD		CW EPD		Purchase \$	
0.67		0.038		26			



Lot 3

Lot 4 BBB Precision 2316 <i>From Triple B Charolais</i>							
BREED		DOB		TAT#			
Charolais		9/18/23		2316			
BW	BW EPD	WW	WW EPD	YW	YW EPD	MILK	MILK EPD
82	0.1	677	58	1197	104	20	
REA EPD		IMF EPD		CW EPD		Purchase \$	
0.64		0.023		24			



Lot 4



New Great Rates for Good Drivers.

ffbic.com



352-237-2124

Tom Cothron, Farm Bureau
5800 SW 20th St.
Ocala, FL 34474

FLAUNP45020



Lot 5	BBB Precision 2401 <i>From Triple B Charolais</i>						
BREED	DOB			TAT#			
Charolais	1/22/24			2401			
BW	BW EPD	WW	WW EPD	YW	YW EPD	MILK	
84	-0.4	614	57	1187	103	21	
REA EPD	IMF EPD	CW EPD	Purchase \$				
0.68	0.015	21					



Lot 6	M1001548 <i>From Mueller Charolais</i>						
BREED	DOB			TAT#			
Charolais	3/5/24			M485			
BW	BW EPD	WW	WW EPD	YW	YW EPD	MILK	
82	-0.9	651	70	1224	111	20	
REA EPD	IMF EPD	CW EPD	Purchase \$				
0.86							

Lot 7	M999365 <i>From Mueller Charolais</i>						
BREED	DOB			TAT#			
Charolais	2/25/24			M476			
BW	BW EPD	WW	WW EPD	YW	YW EPD	MILK	
80	-1.2	651	67	1222	117	26	
REA EPD	IMF EPD	CW EPD	Purchase \$				
0.7							

Lot 8	M999368 <i>From Mueller Charolais</i>						
BREED	DOB			TAT#			
Charolais	2/25/24			M459			
BW	BW EPD	WW	WW EPD	YW	YW EPD	MILK	
82	0.0	600	59	1176	108	25	
REA EPD	IMF EPD	CW EPD	Purchase \$				
0.7							

Lot 9	M1001545 <i>From Mueller Charolais</i>						
BREED	DOB			TAT#			
Charolais	3/13/24			M458			
BW	BW EPD	WW	WW EPD	YW	YW EPD	MILK	
82	-0.4	528	47	1142	90	25	
REA EPD	IMF EPD	CW EPD	Purchase \$				
0.66							

Lot 10	M999363 <i>From Mueller Charolais</i>						
BREED	DOB			TAT#			
Charolais	1/9/24			M451			
BW	BW EPD	WW	WW EPD	YW	YW EPD	MILK	
80	-1.3	607	66	1090	98	28	
REA EPD	IMF EPD	CW EPD	Purchase \$				
0.82							

Lot 11	M999369 <i>From Mueller Charolais</i>						
BREED	DOB			TAT#			
Charolais	2/29/24			M440			
BW	BW EPD	WW	WW EPD	YW	YW EPD	MILK	
70	-2.1	560	55	1085	101	21	
REA EPD	IMF EPD	CW EPD	Purchase \$				
0.73							

Lot 12	M1001540 <i>From Mueller Charolais</i>						
BREED	DOB			TAT#			
Charolais	3/15/24			M431			
BW	BW EPD	WW	WW EPD	YW	YW EPD	MILK	
82	-1.2	555	53	1190	99	22	
REA EPD	IMF EPD	CW EPD	Purchase \$				
0.68							

LONDON FARM AND CATTLE LLC

Quality Beef Cattle and Hay

BRENT LONDON

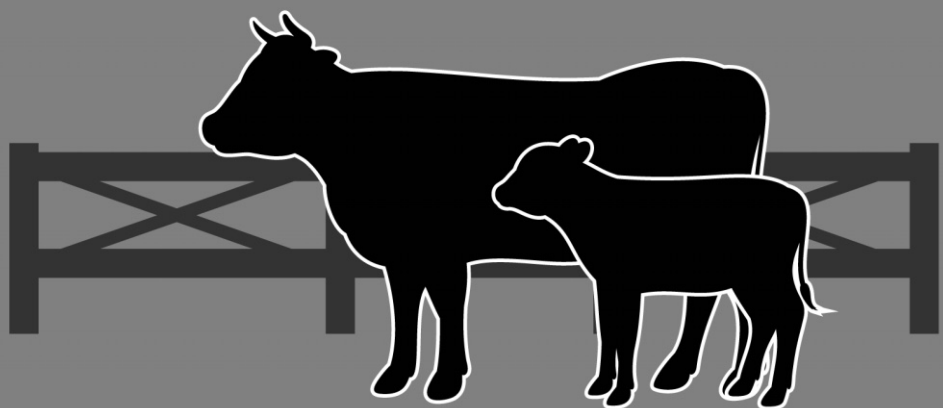
8061 NE Jacksonville Rd
Ocala, FL 34479

brentlondon@me.com

352-622-5774

352-615-2488 cell

352-622-4774 fax



Lot 13	M1001533 <i>From Mueller Charolais</i>						
BREED	DOB			TAT#			
Charolais	4/1/24			M409			
BW	BW EPD	WW	WW EPD	YW	YW EPD	MILK	EPD
85	-0.3	594	67	1224	114	17	
REA EPD	IMF EPD	CW EPD	Purchase \$				
0.87							

Lot 14	M999366 <i>From Mueller Charolais</i>						
BREED	DOB			TAT#			
Charolais	2/25/24			M405			
BW	BW EPD	WW	WW EPD	YW	YW EPD	MILK	EPD
82	-0.8	565	50	989	95	22	
REA EPD	IMF EPD	CW EPD	Purchase \$				
0.63							

Lot 15	M999370 <i>From Mueller Charolais</i>						
BREED	DOB			TAT#			
Charolais	2/29/24			M404			
BW	BW EPD	WW	WW EPD	YW	YW EPD	MILK	EPD
80	-1.2	527	52	1026	99	23	
REA EPD	IMF EPD	CW EPD	Purchase \$				
0.39							

Lot 16	M999367 <i>From Mueller Charolais</i>						
BREED	DOB			TAT#			
Charolais	2/24/24			M402			
BW	BW EPD	WW	WW EPD	YW	YW EPD	MILK	EPD
92	1.3	629	68	1103	117	18	
REA EPD	IMF EPD	CW EPD	Purchase \$				
0.88							

Lot 17	Pure bred 11163 <i>From Little W Farm</i>						
BREED	DOB			TAT#			
Charolais	11/16/23			11163			
BW	BW EPD	WW	WW EPD	YW	YW EPD	MILK	EPD
83							
REA EPD	IMF EPD	CW EPD	Purchase \$				

Lot 18	LWF Kincem's Payday 31524 <i>From Little W Farm</i>						
BREED	DOB			TAT#			
Charolais	3/15/24			31524			
BW	BW EPD	WW	WW EPD	YW	YW EPD	MILK	EPD
84	-0.2	50		94	18		
REA EPD	IMF EPD	CW EPD	Purchase \$				
0.83	0.005	23					

Lot 19	LWF Kincem's Armor 10223 <i>From Little W Farm</i>						
BREED	DOB			TAT#			
Charolais	10/2/23			10223			
BW	BW EPD	WW	WW EPD	YW	YW EPD	MILK	EPD
83	-0.2	61		116	24		
REA EPD	IMF EPD	CW EPD	Purchase \$				
0.82	-0.006	22					

Lot 20	LWF Kincem's High Speed 11183 <i>From Little W Farm</i>						
BREED	DOB			TAT#			
Charolais	11/18/23			11183			
BW	BW EPD	WW	WW EPD	YW	YW EPD	MILK	EPD
82	-0.4	62		116	24		
REA EPD	IMF EPD	CW EPD	Purchase \$				
0.83	-0.003	0.05					



Lot 21 LWF Pistol 12293 <i>From Little W Farm</i>						
BREED		DOB		TAT#		
Charolais		12/29/23		12293		
BW	BW EPD	WW	WW EPD	YW	YW EPD	MILK EPD
83	-1.1	64		126		25
REA EPD		IMF EPD		CW EPD		Purchase \$
0.77		-0.013		29		

Lot 22 LWF Perfect Vision 91423 <i>From Little W Farm</i>						
BREED		DOB		TAT#		
Charolais		9/14/23		91423		
BW	BW EPD	WW	WW EPD	YW	YW EPD	MILK EPD
78	-0.4	55		93		19
REA EPD		IMF EPD		CW EPD		Purchase \$
0.44		0.000		11		

Lot 23 LWF Kincem's White Smoke 92023 <i>From Little W Farm</i>						
BREED		DOB		TAT#		
Charolais		9/20/23		92023		
BW	BW EPD	WW	WW EPD	YW	YW EPD	MILK EPD
84	0.5	63		115		24
REA EPD		IMF EPD		CW EPD		Purchase \$
0.89		-0.001		-0.03		


Lot 24 LWF Blowin Smoke 92623 <i>From Little W Farm</i>						
BREED		DOB		TAT#		
Charolais		9/26/23		92623		
BW	BW EPD	WW	WW EPD	YW	YW EPD	MILK EPD
84	-0.4	57		108		20
REA EPD		IMF EPD		CW EPD		Purchase \$
0.67		-0.005		17		



Lot 25 LWF Kincem's Revolution 9723 <i>From Little W Farm</i>						
BREED		DOB		TAT#		
Charolais		9/7/23		9723		
BW	BW EPD	WW	WW EPD	YW	YW EPD	MILK EPD
85	0.3	62		119		21
REA EPD		IMF EPD		CW EPD		Purchase \$
0.78		-0.007		21		



NORTH EAST AUTO & TRUCK SERVICE

 2140 NE 36th Ave, STE 300-1
 Ocala, FL 34470

 Mon-Thurs: 7:30am-5:30pm, Fri: 7:30am-
 Noon
 Sat-Sun: Closed

(352) 604-5648

Lot 26 B/M Crome Show 40L <i>From Buck Mountain Cattle</i>						
BREED		DOB		TAT#		
Simmental		11/22/23		40L		
BW	BW EPD	WW	WW EPD	YW	YW EPD	MILK EPD
73	2.4	800	77.8	1175	108	20.2
REA EPD		IMF EPD		CW EPD		Purchase \$
0.91		0.02		28.1		



Lot 26

Lot 27 B/M Squared Up 432L <i>From Buck Mountain Cattle</i>						
BREED		DOB		TAT#		
Simmental		9/3/23		432L		
BW	BW EPD	WW	WW EPD	YW	YW EPD	MILK EPD
65	1.4	765	70.1	1075	98	16.9
REA EPD		IMF EPD		CW EPD		Purchase \$
0.81		0.01		24.6		



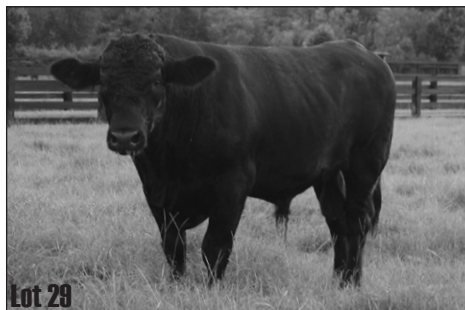
Lot 27

Lot 28 B/M Valentines Pinnacle 32L <i>From Buck Mountain Cattle</i>						
BREED		DOB		TAT#		
Simmental		9/16/23		32L		
BW	BW EPD	WW	WW EPD	YW	YW EPD	MILK EPD
66	1.1	780	68.8	1085	99.1	27.6
REA EPD		IMF EPD		CW EPD		Purchase \$
0.86		0.1		28.3		



Lot 28

Lot 29 B/M Executive Gem 80L <i>From Buck Mountain Cattle</i>						
BREED		DOB		TAT#		
Simmental		8/3/23		80L		
BW	BW EPD	WW	WW EPD	YW	YW EPD	MILK EPD
74	0.9	800	83.4	1180	127.4	23.9
REA EPD		IMF EPD		CW EPD		Purchase \$
0.99		0.15		34.4		



Lot 29



Mid Florida Fence

427-8886

www.MidFloridaFence.net

Lot 30 CA Mr. Emperor Belle 4 From Crazy Acres							
BREED		DOB		TAT#			
Brahman		10/17/23		4			
BW	BW EPD	WW	WW EPD	YW	YW EPD	MILK	MILK EPD
65	0.9	650	11	110	22	8	
REA EPD		IMF EPD		CW EPD		Purchase \$	
0.24		0.80		16			



Lot 31 CA Mr. Belle 3 From Crazy Acres							
BREED		DOB		TAT#			
Brahman		5/8/23		3			
BW	BW EPD	WW	WW EPD	YW	YW EPD	MILK	MILK EPD
70	3.5	700	26	1200	52	5	
REA EPD		IMF EPD		CW EPD		Purchase \$	
0.32		-0.26		30			



Lot 32 MO Bull 314L From MO Brangus							
BREED		DOB		TAT#			
Brangus		10/25/23		314			
BW	BW EPD	WW	WW EPD	YW	YW EPD	MILK	MILK EPD
74	-0.1	565	26	740	54	11	
REA EPD		IMF EPD		CW EPD		Purchase \$	
0.15		0.04					



Lot 33 MO Bull 316L From MO Brangus							
BREED		DOB		TAT#			
Brangus		11/9/23		316			
BW	BW EPD	WW	WW EPD	YW	YW EPD	MILK	MILK EPD
74	2.6	571	37	736	67	5	
REA EPD		IMF EPD		CW EPD		Purchase \$	
0.13		0.04					



**FREE
INSPECTIONS**



**SOUTHERN PRO
ROOFING, LLC**

352-209-5504

Licensed

CCC1333758

Insured

Lot 34		MO Bull 318L <i>From MO Brangus</i>				
BREED		DOB		TAT#		
Brangus		10/13/23		318		
BW	BW EPD	WW	WW EPD	YW	YW EPD	MILK EPD
73	-0.2	460	29	655	53	0.05
REA EPD		IMF EPD		CW EPD		Purchase \$
0.14		0.05				



Lot 34

Lot 35		MO Bull 319L <i>From MO Brangus</i>				
BREED		DOB		TAT#		
Brangus		10/22/23		319		
BW	BW EPD	WW	WW EPD	YW	YW EPD	MILK EPD
71	0.5	530	25	670	46	9
REA EPD		IMF EPD		CW EPD		Purchase \$
0.21		0.03				



Lot 35

Lot 36		MO Bull 321L <i>From MO Brangus</i>				
BREED		DOB		TAT#		
Brangus		10/27/23		321		
BW	BW EPD	WW	WW EPD	YW	YW EPD	MILK EPD
77	-0.8	470	16	640	39	9
REA EPD		IMF EPD		CW EPD		Purchase \$
0.12		0.03				



Lot 36

Lot 37		MO Bull 323L <i>From MO Brangus</i>				
BREED		DOB		TAT#		
Brangus		10/13/23		323		
BW	BW EPD	WW	WW EPD	YW	YW EPD	MILK EPD
73	1.2	500	27	640	49	9
REA EPD		IMF EPD		CW EPD		Purchase \$
0.15		0.03				



Lot 37



Done Right The First Time

SOUTHERN



Est.

2013

PRO FENCE

352-245-1775



Lot 38 MO Bull 326L From MO Brangus							
BREED		DOB		TAT#			
Brangus		11/24/23		326			
BW	BW EPD	WW	WW EPD	YW	YW EPD	MILK	MILK EPD
72	1.2	50	27	700	49	9	
REA EPD		IMF EPD		CW EPD		Purchase \$	
0.15		0.03					



Lot 39 GV Future 530 C238 From Greenview Farms							
BREED		DOB		TAT#			
Braford		11/17/23		C238			
BW	BW EPD	WW	WW EPD	YW	YW EPD	MILK	MILK EPD
81	2.0				0.9		
REA EPD		IMF EPD		CW EPD		Purchase \$	



Lot 40 GV Future 162/7 C257 From Greenview Farms							
BREED		DOB		TAT#			
Braford		11/26/23		C257			
BW	BW EPD	WW	WW EPD	YW	YW EPD	MILK	MILK EPD
71					1.5		
REA EPD		IMF EPD		CW EPD		Purchase \$	



Lot 41 GV AR 118 C409 From Greenview Farms							
BREED		DOB		TAT#			
Braford		10/16/23		C409			
BW	BW EPD	WW	WW EPD	YW	YW EPD	MILK	MILK EPD
60							
REA EPD		IMF EPD		CW EPD		Purchase \$	



MAYO FERTILIZER INC.

P.O. Box 1833 - LAKE CITY, FL 32055



MAYO FERTILIZER

- MAYO STORE -
386-294-2024
300 SE CLYDE AVE.
MAYO, FL 32066

- WILLISTON STORE -
352-528-3431
2089 SW 7TH STREET
WILLISTON, FL 32696



CERTIFIED
CROP ADVISER

SAMMIE ALBRITTON
SALES REPRESENTATIVE
OFFICE 386-752-3155
CELL 352-598-3577
CCA# 371278

Lot 42 GV AR 118 C424 <i>From Greenview Farms</i>						
BREED		DOB		TAT#		
Braford		11/30/23		C424		
BW	BW EPD	WW	WW EPD	YW	YW EPD	MILK EPD
71						
REA EPD		IMF EPD		CW EPD		Purchase \$



Lot 43 H44591704 <i>From JD Miller</i>						
BREED		DOB		TAT#		
Hereford		10/9/22		K529		
BW	BW EPD	WW	WW EPD	YW	YW EPD	MILK EPD
92	1.7	525	47	975	76	29
REA EPD		IMF EPD		CW EPD		Purchase \$
0.49		0.1		61		

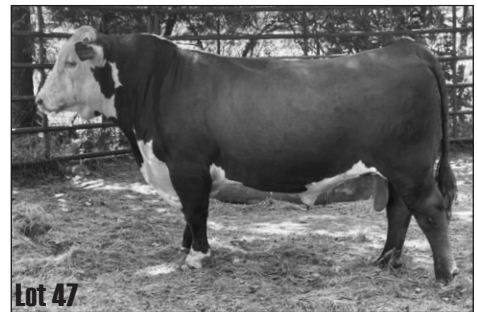
Lot 45 GV Beefmaker 242G C194 <i>From Greenview Farms</i>						
BREED		DOB		TAT#		
Hereford		11/1/23		C194		
BW	BW EPD	WW	WW EPD	YW	YW EPD	MILK EPD
69	0.1	49		77	31	
REA EPD		IMF EPD		CW EPD		Purchase \$
0.42		0.32		68		



Lot 46 GV Churchhill Victor 8001 C208 <i>From Greenview Farms</i>						
BREED		DOB		TAT#		
Hereford		11/6/23		C208		
BW	BW EPD	WW	WW EPD	YW	YW EPD	MILK EPD
82	4.0	57		96	23	
REA EPD		IMF EPD		CW EPD		Purchase \$
0.53		0.7		678		



Lot 47 WB L1 Domino 321 <i>From White's Hereford Farms</i>						
BREED		DOB		TAT#		
Hereford		10/6/23		321		
BW	BW EPD	WW	WW EPD	YW	YW EPD	MILK EPD
75	+2.5	705	55	1010	88	28
REA EPD		IMF EPD		CW EPD		Purchase \$
0.56		0.01		79		



AKIN REALTY COMPANY

Experienced professionals ready to handle all your commercial, industrial, land, and leasing matters



- ✓ Over 80 years of combined real estate experience
- ✓ Certified Commercial Investment Member (CCIM)
- ✓ Members of the Society of Industrial and Office Realtors (SIOR)
- ✓ No "BULL" here

Van Akin, CCIM, SIOR
352-804-2446
van@vanakin.net



Fran Dann Akin, SIOR
352- 266-7795
fran@franakin.com

Lot 48 WB L1 Domino 322 <i>From White's Hereford Farms</i>							
BREED		DOB		TAT#			
Hereford		10/14/23		322			
BW	BW EPD	WW	WW EPD	YW	YW EPD	MILK	MILK EPD
72	2.9	700	56	975	90	32	
REA EPD		IMF EPD		CW EPD		Purchase \$	
0.49		0.03		78			



Lot 49 WB L1 Domino 323 <i>From White's Hereford Farms</i>							
BREED		DOB		TAT#			
Hereford		10/5/23		323			
BW	BW EPD	WW	WW EPD	YW	YW EPD	MILK	MILK EPD
69	2.7	700	57	950	87	28	
REA EPD		IMF EPD		CW EPD		Purchase \$	
0.31		0.21		68			



Lot 50 WB L1 Domino 325 <i>From White's Hereford Farms</i>							
BREED		DOB		TAT#			
Hereford		11/15/23		325			
BW	BW EPD	WW	WW EPD	YW	YW EPD	MILK	MILK EPD
72	2.9	700	59	960	92	30	
REA EPD		IMF EPD		CW EPD		Purchase \$	
0.43		0.12		78			



Lot 51 WB L1 Advance 338 <i>From White's Hereford Farms</i>							
BREED		DOB		TAT#			
Hereford		11/10/23		338			
BW	BW EPD	WW	WW EPD	YW	YW EPD	MILK	MILK EPD
75	2.5	730	56	990	84	28	
REA EPD		IMF EPD		CW EPD		Purchase \$	
0.41		0.02		72			



BELL'S

OUTDOOR SERVICES

LAND CLEARING • SITE DEVELOPMENT
FORESTRY MULCHING • FENCING • DEMOLITION

COMMITTED TO EXCELLENCE

(352) 817-6615

DAVIDBELL@BELLSOS.COM
BELLSOUTDOORSERVICES.COM

Lot 52	WB L1 Domino 342 <i>From White's Hereford Farms</i>						
BREED	DOB			TAT#			
Hereford	10/15/23			342			
BW	BW EPD	WW	WW EPD	YW	YW EPD	MILK	
65	2.5	725	56	945	88	30	
REA EPD	IMF EPD	CW EPD	Purchase \$				
0.041	0.13	70					



Lot 53	4936694 <i>From Country Boy Farms</i>						
BREED	DOB			TAT#			
Red Angus	9/26/23			L305			
BW	BW EPD	WW	WW EPD	YW	YW EPD	MILK	
85	1.3	604	70	1125	116	24	
REA EPD	IMF EPD	CW EPD	Purchase \$				
0.08	0.49	31					

Lot 54	4936678 <i>From Country Boy Farms</i>						
BREED	DOB			TAT#			
Red Angus	9/20/23			L262			
BW	BW EPD	WW	WW EPD	YW	YW EPD	MILK	
70	-3.7	564	63	1005	99	25	
REA EPD	IMF EPD	CW EPD	Purchase \$				
0.11	0.76	21					

Lot 55	10588962 <i>From JD Miller</i>						
BREED	DOB			TAT#			
Ultra Red	9/3/23			389L			
BW	BW EPD	WW	WW EPD	YW	YW EPD	MILK	
60	0.0	599	16	1040	30	6	
REA EPD	IMF EPD	CW EPD	Purchase \$				
0.12	0.09						

Lot 56	21009571 <i>From McMichael Angus Farm</i>						
BREED	DOB			TAT#			
Angus	12/1/23			3039			
BW	BW EPD	WW	WW EPD	YW	YW EPD	MILK	
85	12	605	88		162	34	
REA EPD	IMF EPD	CW EPD	Purchase \$				
0.55	0.91	73					

Lot 57	21009582 <i>From McMichael Angus Farm</i>						
BREED	DOB			TAT#			
Angus	2/5/24			4004			
BW	BW EPD	WW	WW EPD	YW	YW EPD	MILK	
75	+1.6	549	+92		+163	30	
REA EPD	IMF EPD	CW EPD	Purchase \$				
90	93	76					



Rick Stilwell

Soil Sampling

Weed Management

Fertility Recommendations

Fence Line Spraying

Mid-Florida
AG Services, LLC

352-598-3630

rick.midfloridaag@gmail.com

Lot 58		21027962				<i>From McMichael Angus Farm</i>	
BREED		DOB		TAT#			
Angus		12/30/23		3047			
BW	BW EPD	WW	WW EPD	YW	YW EPD	MILK	MILK EPD
83	+0.1	590	+78		+141	+32	
REA EPD		IMF EPD		CW EPD		Purchase \$	
+0.61		+1.57		+76			



Lot 59		21009570				<i>From McMichael Angus Farm</i>	
BREED			DOB		TAT#		
Angus			11/10/23		3037		
BW	BW EPD	WW	WW EPD	YW	YW EPD	MILK	MILK EPD
83	+3.8	621	+94		+151	+23	
REA EPD		IMF EPD		CW EPD		Purchase \$	
0.50		0.90		65			



Lot 60		20966043				<i>From McMichael Angus Farm</i>	
BREED			DOB		TAT#		
Angus			9/13/23		3016		
BW	BW EPD	WW	WW EPD	YW	YW EPD	MILK	MILK EPD
59	+1.9	570	91		157	32	
REA EPD		IMF EPD		CW EPD		Purchase \$	
0.68		0.75		84			



Lot 61		20684068				<i>From McMichael Angus Farm</i>	
BREED			DOB		TAT#		
Angus			9/28/22		2021		
BW	BW EPD	WW	WW EPD	YW	YW EPD	MILK	EPD
89	+3.1	600	+76		+136	+29	
REA EPD		IMF EPD		CW EPD	Purchase \$		
1.38		1.33		73			



THANK YOU!

*to all
Consignors,
Buyers,
& Sponsors*

MARION COUNTY CATTLEMEN'S ASSOCIATION

P.O. Box 6696

Ocala, Florida 34478

and the
Marion County Board
of County Commissioner's

Lot 62	20773863					
	<i>From McMichael Angus Farm</i>					
BREED	DOB		TAT#			
Angus	1/14/23		3005			
BW	BW EPD	WW	WW EPD	YW	YW EPD	MILK EPD
77	2.3	536	83		144	18
REA EPD	IMF EPD	CW EPD	Purchase \$			
0.69	2.00	59				



Lot 63	20912187					
	<i>From Michael Clark</i>					
BREED	DOB		TAT#			
Angus	9/9/23		17			
BW	BW EPD	WW	WW EPD	YW	YW EPD	MILK EPD
REA EPD	IMF EPD	CW EPD	Purchase \$			

Lot 64	21030184					
	<i>From Dry Branch Angus</i>					
BREED	DOB		TAT#			
Angus	3/12/24		2403			
BW	BW EPD	WW	WW EPD	YW	YW EPD	MILK EPD
52	-0.2	576	73	845	129	31
REA EPD	IMF EPD	CW EPD	Purchase \$			
0.67		0.45				

Lot 65	21030180					
	<i>From Dry Branch Angus</i>					
BREED	DOB		TAT#			
Angus	3/18/24		2404			
BW	BW EPD	WW	WW EPD	YW	YW EPD	MILK EPD
61	-1.5	647	61	962	119	36
REA EPD	IMF EPD	CW EPD	Purchase \$			
0.90		59				

Lot 66	21030185					
	<i>From Dry Branch Angus</i>					
BREED	DOB		TAT#			
Angus	3/24/24		2408			
BW	BW EPD	WW	WW EPD	YW	YW EPD	MILK EPD
78	2.0	667	67	931	119	29
REA EPD	IMF EPD	CW EPD	Purchase \$			
51		63				



AV-Rated firm by Martindale Hubbell

Practice Areas:

- Complex Commercial Litigation
- Real Estate
- Construction Law
- Business and Commercial Law

- Banking and Finance
- Estate and Tax Planning
- Estate and Trust Litigation
- Family Law & Guardianship

- Environmental Law
- Alternative Dispute Resolution
- Administrative Law
- Agriculture Law

1309 SE 25th Loop - Ste. 101 - Ocala, FL 34471
352-502-5811
Info@SmithCorbett.com

Lot 67		AAA 21037611				
		<i>From Barnett Angus Ranches</i>				
BREED		DOB		TAT#		
Angus		11/18/23		138L		
BW	BW EPD	WW	WW EPD	YW	YW EPD	MILK EPD
76	-1.4	780	+67	1105	+112	+27
REA EPD		IMF EPD		CW EPD		Purchase \$
+0.60		+0.96		+44		



Lot 67

Lot 68		AAA 21027426				
		<i>From Barnett Angus Ranches</i>				
BREED		DOB		TAT#		
Angus		10/14/23		149L		
BW	BW EPD	WW	WW EPD	YW	YW EPD	MILK EPD
77	+0.8	788	+62	1230	+112	+21
REA EPD		IMF EPD		CW EPD		Purchase \$
+1.09		+1.36		+47		



Lot 68

Lot 69		AAA 21027495				
		<i>From Barnett Angus Ranches</i>				
BREED		DOB		TAT#		
Angus		9/3/23		150L		
BW	BW EPD	WW	WW EPD	YW	YW EPD	MILK EPD
79	+1.8	983	+81	1282	+135	+25
REA EPD		IMF EPD		CW EPD		Purchase \$
+0.64		+0.59		+65		



Lot 69

Lot 70		AAA 21037456				
		<i>From Barnett Angus Ranches</i>				
BREED		DOB		TAT#		
Angus		11/28/23		160L		
BW	BW EPD	WW	WW EPD	YW	YW EPD	MILK EPD
73	+0.2	601	+69	1033	+129	+14
REA EPD		IMF EPD		CW EPD		Purchase \$
+0.46		+1.04		+40		



Lot 70





CRACKER LAND AND CATTLE CO.

HUNTER KETCHAM

295 SE BAILEY ST.
LAKE CITY, FL 32024

OFFICE: (386) 758-2485
MOBILE: (386) 365-8262



"Conception to Reality"

State Certified General Contractor

• DESIGN SERVICES
• ADDITIONS / REMODELS / RENOVATIONS
RESIDENTIAL / COMMERCIAL / CONTRACTOR



www.kapdesigngroup.com
352-572-7454

CGC1514540



YOUR BUSINESS IS OUR BUSINESS.

4.00%
APY

Business Checking Plus Interest¹
On balances up to \$10,000

4.25%
APY

Business Money Market²
On balances over \$250,000

Visit any branch to open an account.

**YOUR LIFE.
YOUR MONEY.
YOUR CREDIT UNION.**

MIDFLORIDA
Florida's business credit union

MIDFLORIDA Credit Union membership and eligibility requirements for business and business owner(s) apply. Annual Percentage Yield (APY) shown is accurate as of October 1, 2025. Rates may change after the account is opened, without notice. No institutional funds. Fees may reduce earnings. Contact employees for further information on fees and terms. 1. Business Checking Plus Interest: Limit 2 accounts per TIN or SSN. 4.00% APY on first \$10,000. Minimum to open, \$500. 2. Business Money Market: 4.25% APY applies only to amounts exceeding \$250,000; other rates are lower; see account terms for details. Minimum to open is \$10,000. Insured by NCUA.